



emerald
HILLS™

ALAM DAMAI • CHERAS

FREEHOLD 永久产权

LAKEFRONT CONDOMINIUMS

湖景公寓



SPACES *for* TRUE LIVING

理想空间打造极致生活 ◆

GOOD ENVIRONMENTS BREED GOOD PEOPLE

好的环境培养良好人格

Located on the peak of Alam Damai, this exclusive gated and guarded master planned development of open spaces and ample facilities is the perfect place to settle down and raise a family.

座落于蕉赖城镇内 Alam Damai 的顶点，这项发展项目拥有围篱社区、宽敞的居家空间和多样化的休闲设施。它是您成立家园的理想地点。

INFINITE AVENUES of LEISURE

休闲的无限平台

THE PURSUIT OF HAPPINESS

对幸福的追求

A Central Park, Clubhouse, 1.7km jogging path and myriad facilities exclusive to residents span across the entire development providing safe haven for loved ones to explore and roam.

景色优美的中央公园、休闲俱乐部、长达 1.7 公里的慢跑径和各式各样为居民量身打造的休闲设施，均遍布在这个宽敞宁静的住宅区，可尽情享受与家人或所爱的人相聚天伦的时光。



LAKEFRONT CONDOMINIUMS

湖景公寓

ELEVATED BY MODERN COMFORTS

提升现代舒适生活环境

Suited to a spectrum of lifestyles, these stylish condominiums are open-plan, bringing in light and cool air to nurture family. Overlooking the Central Lake, selected units come with their own private garden.

伴着优美的中央湖泊，坐拥开放式空间设计的湖景公寓，让您享有明亮通畅舒适的居家环境，同时投入沉醉于大自然的怀抱中；它将丰富您的居家生活，特定单位拥有私人花园。

MASTER PLAN

总体设计平面图



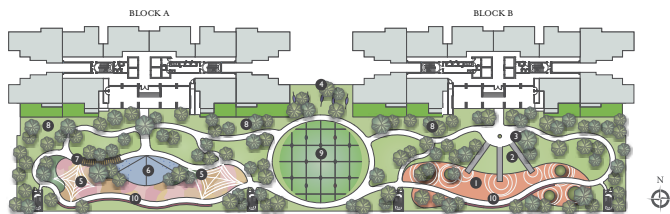
LEGEND 图例

Condominium
公寓

- | | | | |
|---------------------------------|--|-----------------------------|--------------------------------------|
| 1 Guardhouse
警卫室 | 7 Sunken Lounge
休憩区 | 17 Floating Plaza
湖畔广场 | 4 Lakefront Condos - Block A
A座大楼 |
| 2 Entrance Boulevard
大道入口 | 10 Kid's Pool
儿童游泳池 | 18 Kick-about Lawn
草坪 | 5 Lakefront Condos - Block B
B座大楼 |
| 3 Residents' Clubhouse
休闲俱乐部 | 11 Playground
游乐园 | 19 Trellis Walkway
绿荫走道 | 6 Lakefront Condos - Block C
C座大楼 |
| 4 Central Lake
中央湖泊 | 12 Jogging / Bicycle Track
慢跑 / 骑车径 | 20 Elevated Pavilion
观景亭 | 7 Lakefront Condos - Block D
D座大楼 |
| 5 Multipurpose Hall
多功能礼堂 | 13 Floating Pavilion
湖畔亭 | 21 Amenities
便利设施 | 8 South Tower Podium
南面大楼设施平台 |
| 6 Gymnasium
健身房 | 14 Swing Garden
秋千花园 | 22 Garden Terraces
花园美宅 | 9 North Tower Podium
北面大楼设施平台 |
| 7 Pool Deck
泳池甲板 | 15 Par Course
室外活动区 | 23 Jungle Trail
丛林径 | |
| 8 Lap Pool
游泳池 | 16 Amphitheater
户外剧场 | | |

SOUTH TOWER LEVEL 7 PODIUM

南面大楼第7层设施平台



LEGEND 图例

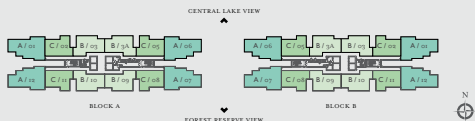
- | | | | |
|----------------------|--------------------------|------------------------|-------------------------|
| ① Fun Mound
土墩游戏区 | ④ Hammock Garden
吊床花园 | ⑦ Hanging Bridge
吊桥 | ⑨ Donut Swings
甜甜圈秋千 |
| ② Fun Climb
趣味攀爬区 | ⑤ Net Play
网型游乐区 | ⑧ Garden
花园 | ⑩ Ribbon Alcove
曲形板凳 |
| ③ Fun Slide
趣味滑道 | ⑥ Play Slope
欢乐坡 | | |



Donut Swings

FLOOR PLANS

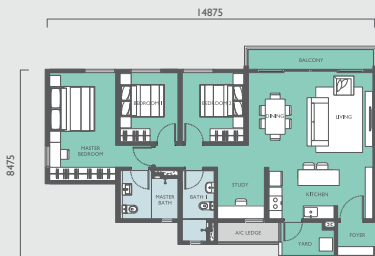
设计平面图



TYPE A 房型 A

Built-up 1,195 sq.ft.
3+1 Bedrooms, 2 Bathrooms

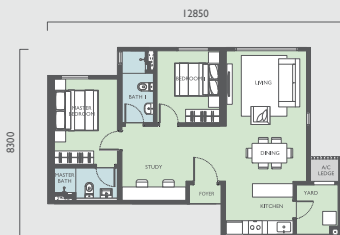
1,195 平方英尺
3+1 卧室, 2 浴室



TYPE B 房型 B

Built-up 893 sq.ft.
2+1 Bedrooms, 2 Bathrooms

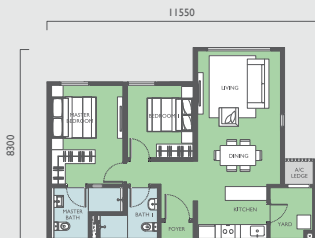
893 平方英尺
2+1 卧室, 2 浴室



TYPE C 房型 C

Built-up 840 sq.ft.
2 Bedrooms, 2 Bathrooms

840 平方英尺
2 卧室, 2 浴室



LOCATION *is* KEY

热门地标

Located just 18km from Kuala Lumpur City Centre, enjoy the convenience of ample public transport options plus accessibility through various major highways including KESAS, the MRR2 and Cheras-Kajang Highway. A plethora of amenities, dining options, shopping, health care and educational institutions are all within easy reach.

距离吉隆坡市中心仅 18 公里，各式公共交通与邻近的数个主要高速大道，包括 KESAS、MRR2 及 Cheras-Kajang 高速大道让居民体验四通八达的便利交通。多样化的配套设施、餐饮选择、购物天堂、医疗保健及教育机构都近在咫尺，提供一切生活所需。



Come & Visit Our Sales Gallery Show Units Open for Viewing

欢迎参观我们的销售展厅 示范单位开放供参观

Emerald Hills Sales Gallery

Open Daily : 9:00 am - 6:00 pm

Another Project By

GuocoLand Malaysia
A Member of the Hongkong Land

Developer

GLM Emerald Hills (Cheras) Sdn Bhd
Level 13, Wisma GuocoLand, Damansara City,
No. 4 Jalan Damansara, Bukit Damansara 50490, Kuala Lumpur.
T: 03-2726 1000 F: 03-2726 1001

1300 1300 33
emeraldhills.com.my

The information, specifications, perspectives and plans herein contained may be subject to amendments as may be required by the relevant authorities or the developer's consultants. All specifications, drawings and plans are preliminary or artist's impressions only. While care has been taken in providing the information, specifications, perspectives and plans herein contained, the developer shall not under any circumstances be held liable, responsible or accountable for any inaccuracies and revisions or charges that may be made from time to time and in any case, with or without notice being given by the developer, or for any losses, liabilities and damages that may arise therefrom.