

MILLA

RESIDENCE

# RECREATING NEIGHBOURHOOD

Experience a reimagined neighbourhood where modern living intertwines seamlessly with the warmth of community, the embrace of sustainability, and the convenience of cutting-edge technology.

## COMMUNITY

Discover the vibrant social and casual spaces where residents form close-knit bonds, creating an enriching and welcoming community.

## SUSTAINABILITY

Embark on sustainable living at its best, as our development exemplifies energy and space efficiency, harmonizing modern comforts with a greener future for all.

## TECHNOLOGY

Step into the future with our tech-driven development, where innovative solutions elevate convenience and safety, redefining modern living for an unmatched connected experience.



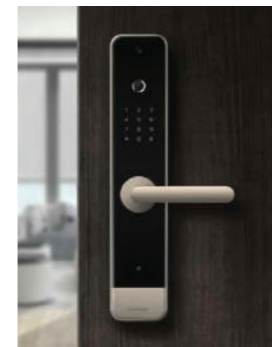
# TECH-DRIVEN CONVENIENCE



Introducing our revolutionary automated car park, where convenience and safety meet seamlessly. Just leave your car in the automated car park lift and relax in our exquisitely designed lounge while our technology takes care of the rest. Enjoy a stress-free parking experience that prioritizes your comfort and peace of mind. With the touch of modern technology, it reimagines the way you park your car, offering a new level of convenience.



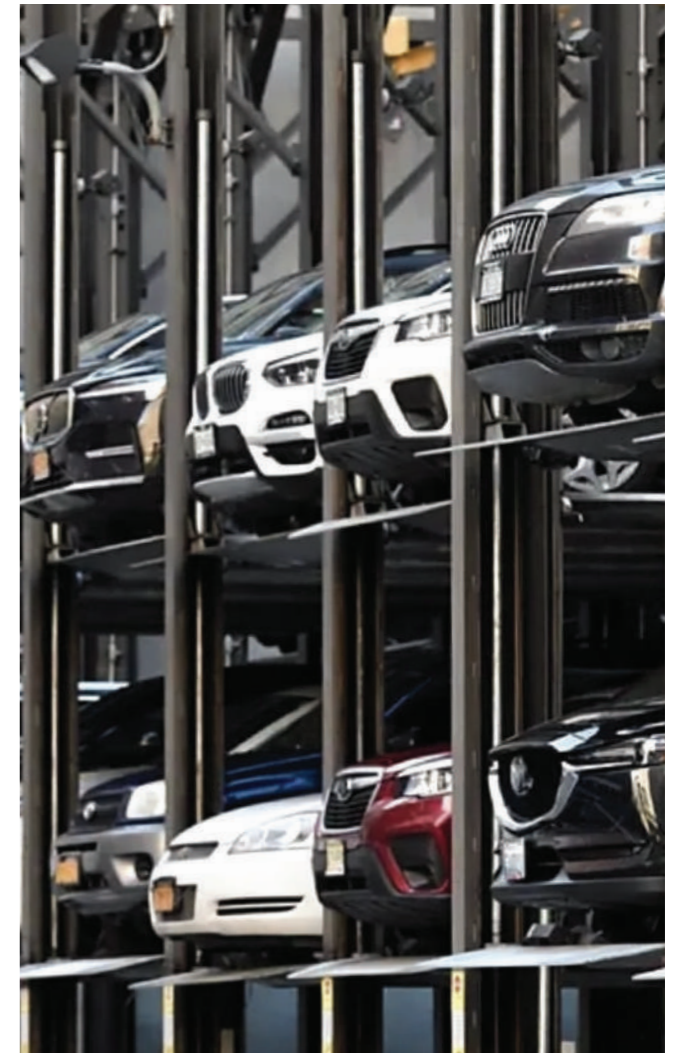
Automatic number-plate recognition enhances security and user-friendly experience.



Control home access from your smartphone for convenience and peace of mind, ensuring security.



Discover the magic of our cleaning robots, revolutionizing common area cleanliness with advanced technology.



## ASEAN'S LARGEST AUTOMATED CAR PARK

Experience the future of simplicity and convenience. Behold a marvel of innovation – an **extraordinary 1,848 parking bays** seamlessly integrated within a residential haven.

## 16 UNITS OF CAR LIFT

An innovative, secure solution streamlining your everyday actions and lifestyle.

## A CUP OF COFFEE WAITING TIME

Like a fleeting moment of indulgence, it's as if the combined task of driving, parking, and walking dissolves as swiftly as the steam rising from your morning brew.

## PIONEERING THE PATH TO PROGRESS



Samjung Tech stands as the paragon of reliability and integrity since 1979. With an impressive installation record exceeding

## 250,000 BAYS

**across continents** – Korea, Thailand, Singapore, Russia, Iran and Qatar.



## GATHERING SPOTS FOR CONNECTION

A lively community spot where spaces like the atrium, social kitchen, and co-working lab seamlessly foster connections, learning, and bonds. Unite effortlessly, sharing laughter, ideas, and passions, while cultivating camaraderie. Embrace a place where multiple generations thrive, and the joy of communal living prevails.

ATRIUM @ G GLOOR  
Artist's Impression Only



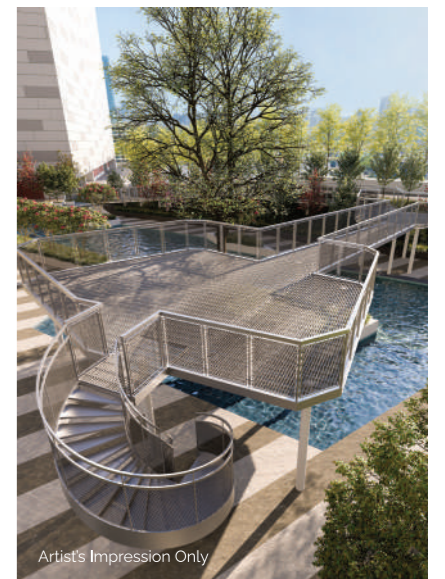
## REVITALIZING NATURE CONNECTIONS

Our spaces have been thoughtfully designed to embrace the soothing flow of water and natural ventilation, and welcome abundant sunlight, intertwining comfort with eco-consciousness.



WATER CASCADES @ G GLOOR  
Artist's Impression Only

Timeless materials unite with lush green landscapes, serene water elements, and inviting semi-open areas, crafting a sanctuary that fosters well-being and celebrates our profound connection to the environment. Experience the tranquil embrace of water and nature, and forge a peaceful and rejuvenating lifestyle.



Artist's Impression Only



LAP POOL @ G GLOOR  
Artist's Impression Only



# THE NEIGHBOURHOOD REIMAGINED – A VISION FOR CONNECTED LIVING

A dynamic community that nurtures meaningful connections and shared experiences, inspiring a new era of togetherness.

Artists' Impression Only



# THE NEIGHBOURHOOD REIMAGINED – A VISION FOR CONNECTED LIVING

A dynamic community that nurtures meaningful connections and shared experiences, inspiring a new era of togetherness.

Artists' Impression Only



# THE SYNERGY OF COMMUNITY, SUSTAINABILITY, AND TECHNOLOGY



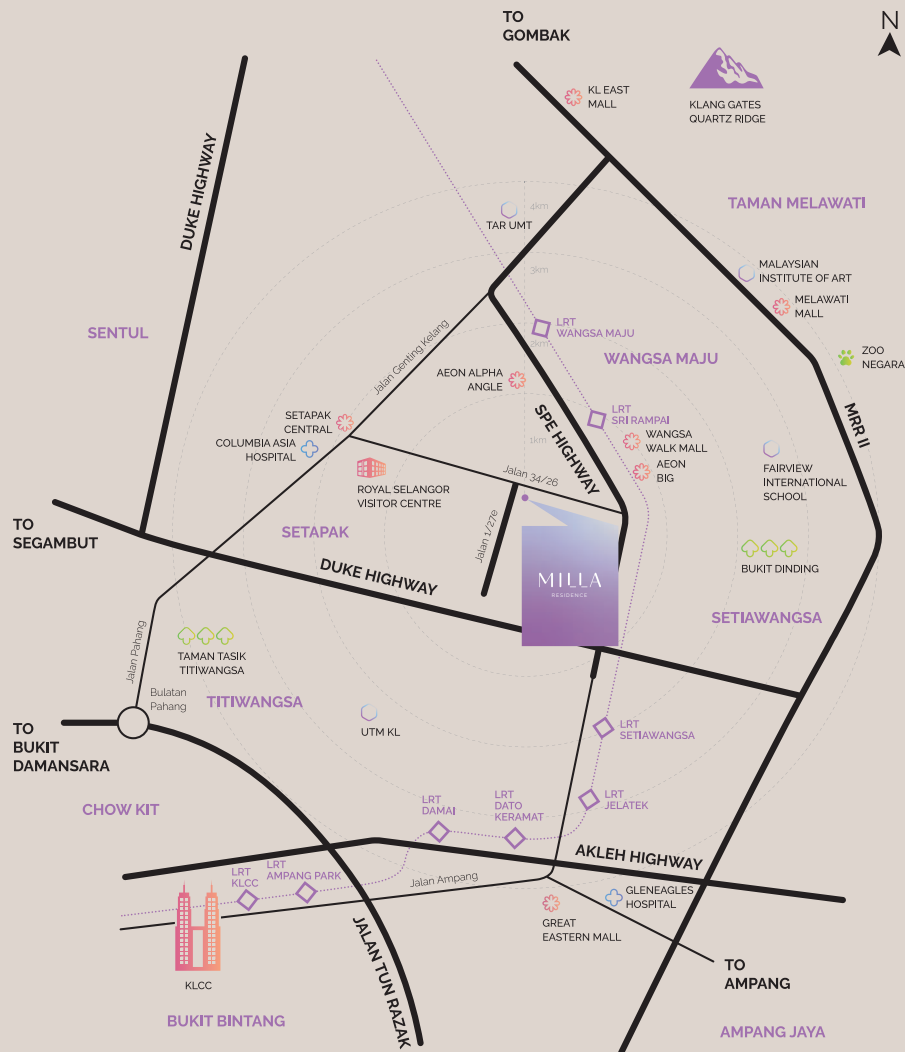
# URBAN CONVENIENCE

ONLY 6 STATIONS FROM KLCC

Unveil the epitome of urban living, just 6 stations from KLCC. Beyond KLCC's allure, immerse yourself in a vibrant neighbourhood of malls, schools, universities, and parks at your doorstep. Embrace a life where convenience harmonizes with recreation, learning, and relaxation within your own community. Welcome to contemporary city living, where accessibility and comfort seamlessly converge.

## NEARBY AMENITIES

	<b>LRT STATION</b>	
	LRT Sri Rampai	1km
	<b>MALL</b>	
	AEON Big	1km
	Wangsa Walk Mall	1km
	AEON Alpha Angle	2km
	Setapak Central	2km
	Melawati Mall	3km
	Great Eastern Mall	5km
	KL East Mall	6km
	<b>EDUCATION</b>	
	Fairview Int. School	3km
	TAR UMT	4km
	UTM KL	4km
	Malaysian Institute of Art	4km
	<b>HEALTHCARE</b>	
	Columbia Asia Hospital	3km
	Gleneagles Hospital	5km
	<b>RECREATION</b>	
	Royal Selangor Visitor Centre	2km
	Zoo Negara	4km
	Klang Gates Quartz Ridge	6km



**BEVERLY WM SDN BHD** (1072862H)  
A subsidiary of Beverly Group Sdn Bhd  
GogA, Residensi Lexa,  
No. 45, Jalan 34/26, Wangsa Maju,  
53300 Kuala Lumpur.  
Tel: 03-4816 1616 Fax: 03-4816 1617  
www.beverlygroup.my



**Waze and Google Map:**  
**MILLA SALES GALLERY**



A DEVELOPMENT BY:  
**BEVERLY**  
GROUP

IN COLLABORATION WITH:  
**mapletree**



Developer License No: 14347/05-2028/0748 (R) | Validity: 28/05/2023 - 27/05/2028 | Advertising & Sales Permit No: 14347-5/11-2026/1205(NH-S) | Validity: 02/11/2023 - 01/11/2026 | Tenure: Freehold, No restriction-in-interest | Land Encumbrances: Malaysian Banking Berhad | Expected Date of Completion: June 2028 | Selling Price: Tower A: RM 549,260 (minimum) - RM 828,760 (maximum) | Tower B: RM 560,360 (minimum) - RM 1,040,450 (maximum) | Type of Property: Service Apartment | No. of unit: Tower A: 725; Tower B: 681 | Approving Authority: Dewan Bandaraya Kuala Lumpur | Building Plan Reference No: BP U2 OSC 2023 0077 (1g)

All information/ layout/ design/ specification/ plans contained herein (collectively, "Information") are intended to serve as guide only and/or are artists' impression only. The Information herein are not a representation of the actual unit and do not form part of an offer or contract. All measurements are approximate. The Information are subject to approval by the relevant authorities and may be amended as required/ advised by the relevant authorities and/ or project consultants without further notice to you. While all care has been taken in preparing this material, we are not responsible for any inaccuracy or variation in the Information herein. Please refer to the Sale and Purchase Agreement for the specification and layout of the actual unit.

