

R SUITES

# CHANCERY

RESIDENCES

BY RADIUM

FREEHOLD



The sleek and modern architectural touch of the Chancery Residences commands attention from all directions.

With its prime location, the residence is set to emerge as a landmark onto its own. Its luxurious ambience promises an exceptional lifestyle right in the heart of the city.



A Provisional **GreenRe** Gold Certification has been awarded by REHDA Malaysia



R SUITES

# CHANCERY RESIDENCES

EXCHANGE 106  
@ TRX  
(6.5km)

MERDEKA 118  
(9.5km)

KL TOWER  
(6.4km)

PETRONAS  
TWIN TOWERS  
(5km)

\*SUPERIMPOSED  
PANORAMIC AERIAL VIEW





\*ARTIST'S IMPRESSION

### BREATHTAKING

Just beyond a scenic water lily pond, tree-lined avenues lead to eight resplendent gardens and 32 lifestyle facilities perfect for any age whether it is a quick Zoom meeting, workout or simply relaxing.



\*ARTIST'S IMPRESSION



\*ARTIST'S IMPRESSION

### ENTRÉE

Designed to impress, the elegantly composed arrival foyer sets the scene. An entrance statement to elevate you into the upper echelons of society.

## 32 LIFESTYLE FACILITIES

### Level 9 Podium Deck

LEGEND

- |                   |                         |                       |   |
|-------------------|-------------------------|-----------------------|---|
| 1 Lap Pool        | 8 Children's Playground | 15 Seating Logs       | 22 Spice Garden                         |
| 2 Aqua Gym        | 9 Glamping Pod          | 16 Monet Garden       | 23 Zen Garden                           |
| 3 Children's Pool | 10 Forest Trail         | 17 Vine Trellis       | 24 The Meadow                           |
| 4 Bubble Bath     | 11 Hammock Garden       | 18 Party Lawn         | 25 Sculpture Garden                     |
| 5 Chillax Lounge  | 12 Secret Alcove        | 19 Party/BBQ Pavilion | 26 Outdoor Lounge                       |
| 6 Party Pool      | 13 Reflexology Path     | 20 Pristine Lawn      | 27 Co-working Space                     |
| 7 Dining Pavilion | 14 Summer Garden        | 21 Seating Alcove     | 28 Basketball Court & Multipurpose Hall |



### Level 9 Mezzanine

LEGEND

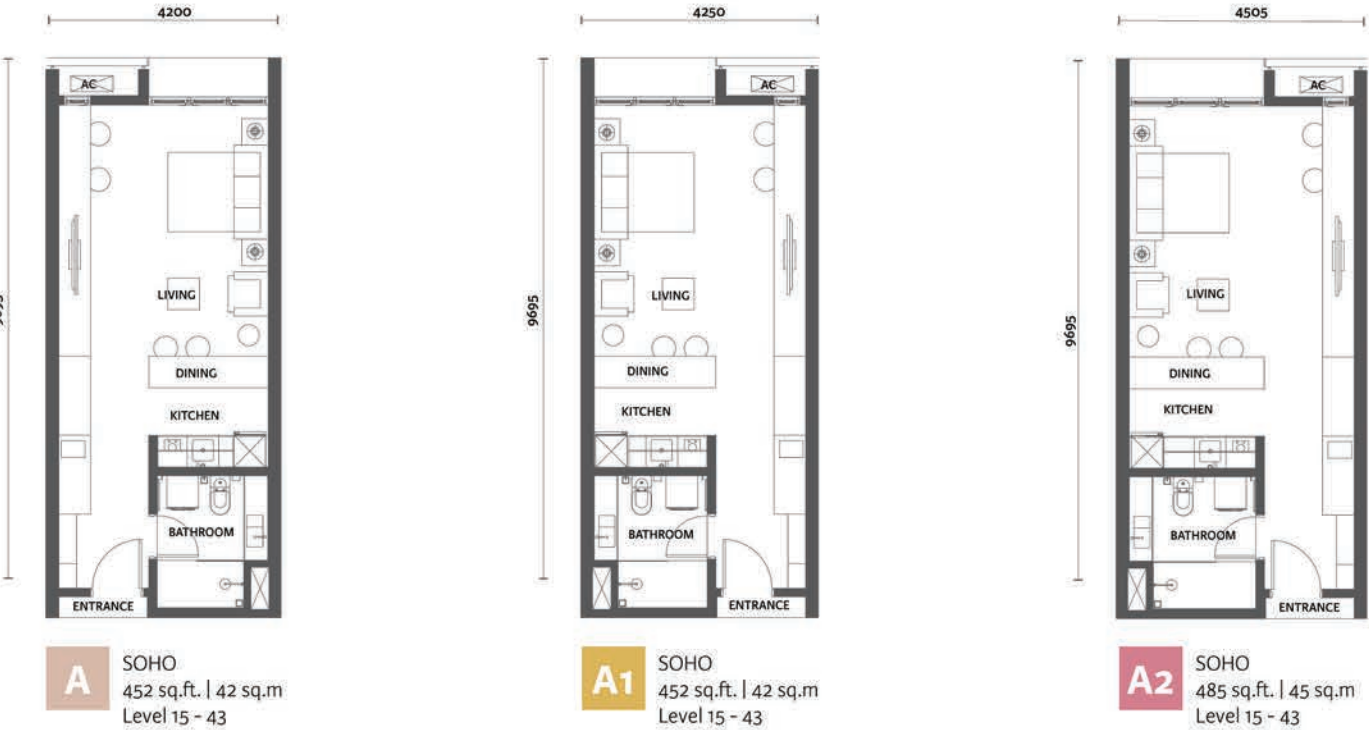
- |                    |        |               |                 |
|--------------------|--------|---------------|-----------------|
| 29 Yoga/Dance Room | 30 Gym | 31 Games Room | 32 Mini Theatre |
|--------------------|--------|---------------|-----------------|





FLOOR PLAN

Series A



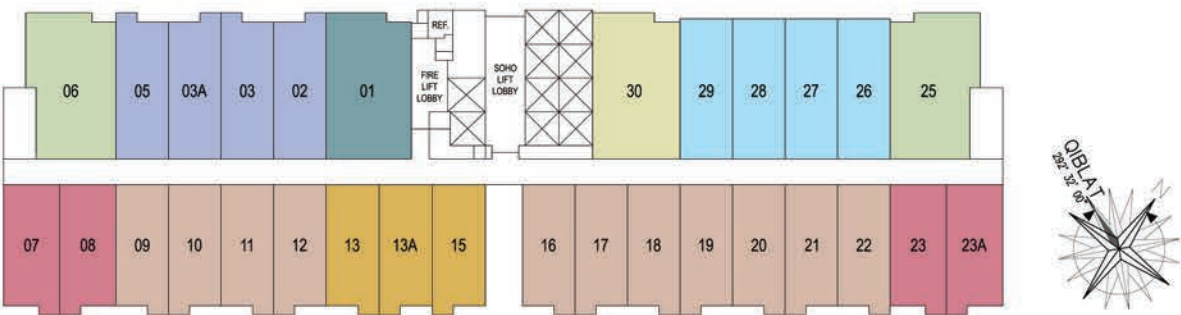
Series B



Series C



KEY PLAN



SPECIFICATIONS

STRUCTURE	Reinforced Concrete Frame		
WALL	Masonry Brick/ Concrete Wall/ Lightweight Block & Panel		
WALL FINISHES	Quality Tiles	- Bathrooms Ceiling Height	- All Unit Types
	Skim Coat & Paint Finish	- All Other Walls	
FLOOR FINISHES	Quality Tiles	- SOHO	- Type A, A1, A2,B, B1, C, C1, C2
		- Balcony	- Type B1, C, C1, C2
		- All Bathrooms	- All Unit Types
	Timber	- Master Bedroom/ Bedroom 2/ Bedroom 3/ Bedroom 4	- Type C, C1, C2
	Cement Render	- AC Ledge	
WINDOW	Aluminium Framed Window With Glass		
DOOR	Fire Door/ Timber Door/ Plywood Flush Door/Aluminium Framed Sliding Glass Door/ Frameless Glass Door		
LOCKS	Quality Locksets		
CEILING FINISHES	Skim Coat & Paint	- All Ceilings	
	Plaster Ceiling	- All Bathrooms	
ROOF	Reinforced Concrete Roof/ Metal Decking Roof		

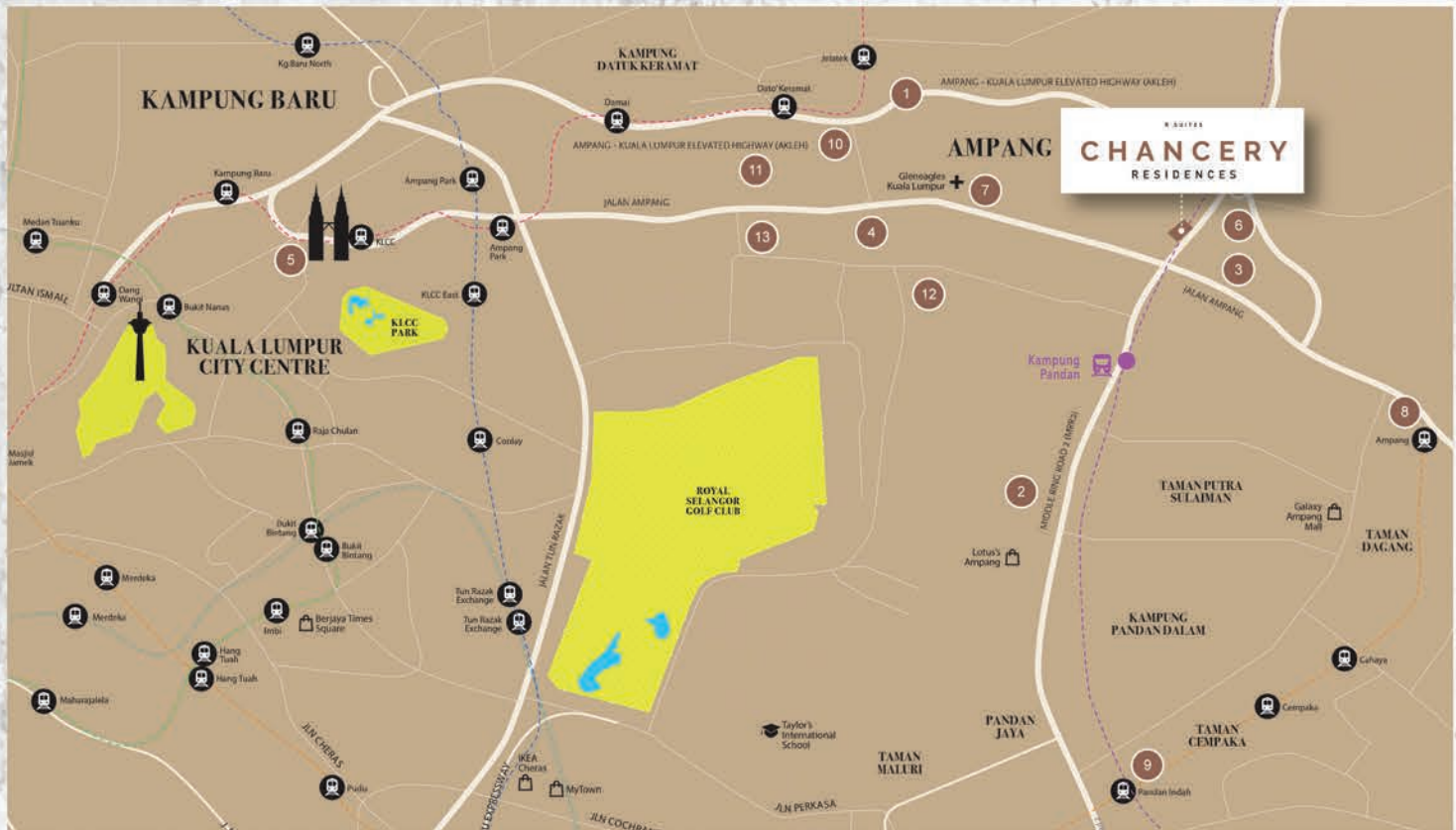
SANITARY SPECIFICATION	Unit Type							
	A	A1	A2	B	B1	C	C1	C2
Wash Basin	1	1	1	1	1	2	2	2
Wash Basin Tap	1	1	1	1	1	2	2	2
WC	1	1	1	1	1	2	2	2
Hand Bidet	1	1	1	1	1	2	2	2
Toilet Roll Holder	1	1	1	1	1	2	2	2
Shower Point	1	1	1	1	1	2	2	2
Bib Tap	1	1	1	1	1	1	1	1
Kitchen Sink	1	1	1	1	1	1	1	1
Kitchen Tap	1	1	1	1	1	1	1	1

ELECTRICAL SPECIFICATION	Unit Type							
	A	A1	A2	B	B1	C	C1	C2
Lighting Point	8	8	8	8	9	16	16	16
Fan Point	1	1	1	1	1	2	2	2
Power Point	16	16	16	16	16	22	22	22
AC point	1	1	1	1	1	3	3	3
Water Heater Point	1	1	1	1	1	2	2	2
Electrical DB	1	1	1	1	1	1	1	1
SMATV Point	1	1	1	1	1	1	1	1
Door Bell Point c/w Switch	1	1	1	1	1	1	1	1
Fibre Wall Socket Outlet	1	1	1	1	1	1	1	1



# STRATEGICALLY LOCATED FOR BEST CONNECTIVITY

Nestled in the city's main business hub, Chancery Residences offers a vibrant lifestyle, enveloped in gorgeous interiors for the discerning.



## MAJOR HIGHWAY

1. Ampang KL Elevated Highway (AKLEH) - 0.1km
2. Middle Ring Road 2 (MRR2) - 0.1km



## SHOPPING CENTRE

3. Ampang Point Shopping Mall - 0.1km
4. Great Eastern Mall - 5km
5. Suria KLCC - 7km



## MEDICAL CENTRE

6. KPJ Ampang Puteri Specialist Hospital - 0.1km
7. Gleneagles Hospital KL - 1.7km



## PUBLIC TRANSPORTATION

8. LRT Ampang - 3.8km
9. LRT Pandan Indah - 4.1km



## SCHOOL

10. SMK Sri Ampang - 3.1km
11. SMK (P) Puteri Ampang - 3.2km
12. The International School of KL (ISKL) - 3km
13. Sayfol International School - 3.3km

■ ■ ■ MRT Putrajaya Line

■ ■ ■ MRT Kajang Line

■ ■ ■ KL Monorail Line

■ ■ ■ LRT Ampang Line

■ ■ ■ LRT Kelana Jaya Line

■ ■ ■ Proposed MRT3 Line

**RADIUM**  
BUILDING GOOD



**CHANCERY RESIDENCES SALES GALLERY**  
Lot 1243, Jalan Ulu Klang  
55000 Ampang, Kuala Lumpur  
T 603 4051 2268  
F 603 4050 5518  
E enquiry@radiumdevelopment.com



CHANCERY RESIDENCES SALES GALLERY  
chanceryresidences.com

**+60111 722 5550**

Developer: Idaman Sejiwa (Ampang) Sdn Bhd (201101011792 (939926-H) • Type: SOHO • Developer's License: 30121/07-2027/0120(A) • Validity Period: 18 July 2022 - 17 July 2027 • Advertising Permit: 30121-1/11-2025/0330(A)-(S) • Validity Period: 15 November 2022 - 14 November 2025 • Building Plan Approval No.: BPU30SC20211525 • Approving Authority: Dewan Bandaraya Kuala Lumpur • Tenure: Freehold • Expected Date of Completion: Nov 2027 • Encumbrances: UOB • Total Units: 944 • Price: RM455,000 (Min) - RM1,860,000 (Max) • Bumiputera Discount: 5%

THIS ADVERTISEMENT HAS BEEN APPROVED BY MINISTRY OF HOUSING

Disclaimer: The information contained herein this material is subject to change and cannot form part of an offer contract. All renderings are artist's impression only. All measurement are approximate. While every reasonable care has been taken in preparing this material, the developer/proprietor cannot be held responsible for any inaccuracy. All the above items are subject to variation, modifications & substitutions as may be required by the Authorities or recommended by the Architect or the Engineer.