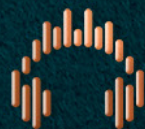


CENTRIX
THE STATION, KLCC



RHAPSODY OF LIVING . LIFE ALONG YOUR TEMPO

IN TUNE WITH YOU

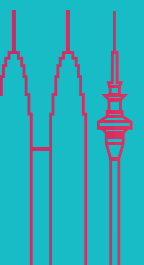


A NEW HARMONY COMPOSED FOR TOD CITY LIVING

A Rhapsody is more than music. It is movement and emotion, layered and evolving, woven into a singular, expressive whole.

Centrix The Station is shaped by that same philosophy. Architecture, community, and everyday living are seamlessly composed, flowing together with clarity and intent. Positioned at the heart of the city, it emerges as both an urban landmark and a vital connector — drawing people, moments and possibilities into one continuous experience.

Envisioned as a refined urban composition, Centrix The Station unfolds through layered forms and purposeful spaces where architecture, lifestyle and human connection exist in harmony. Inspired by the rhythm and structure of music, it balances Kuala Lumpur's dynamic energy with a sense of measured calm, presenting a contemporary interpretation of transit-oriented living that is thoughtful, composed and enduring.



THE FLOW OF THE CITY

Where you feel the pulse in every way

At Centrix The Station, lines are more than routes. They are the threads that bind the city together. Rail lines, skyline edges, pedestrian paths and the quiet rhythms of daily life converge in one connected place.

Positioned directly above an LRT station and moments from the monorail, Centrix The Station brings the city effortlessly within reach. KLCC is no longer a destination you travel to — it surrounds you, frames your view and becomes part of your everyday rhythm.

Set within the iconic KLCC district at the intersection of Jalan Ampang and Jalan Sultan Ismail, Centrix The Station is encircled by Kuala Lumpur's most recognisable skyscrapers, commercial landmarks and cultural destinations. This is a location defined not by proximity, but by direct connection.

As the only development in KLCC offering uninterrupted, all-weather access to two urban rail systems, Centrix The Station ensures seamless mobility at all times. Dang Wangi LRT places KLCC just two stops away, while the monorail connects effortlessly to TRX, Bukit Bintang and beyond. From city landmarks to Kuala Lumpur International Airport, every journey begins with ease.

Here, lines do more than move you. They draw you into the rhythm of the city.

CENTRIX
THE STATION. KLCC

KLCC
900m

THE
EXCHANGE
TRX
2.7km

KL
TOWER
1.2km

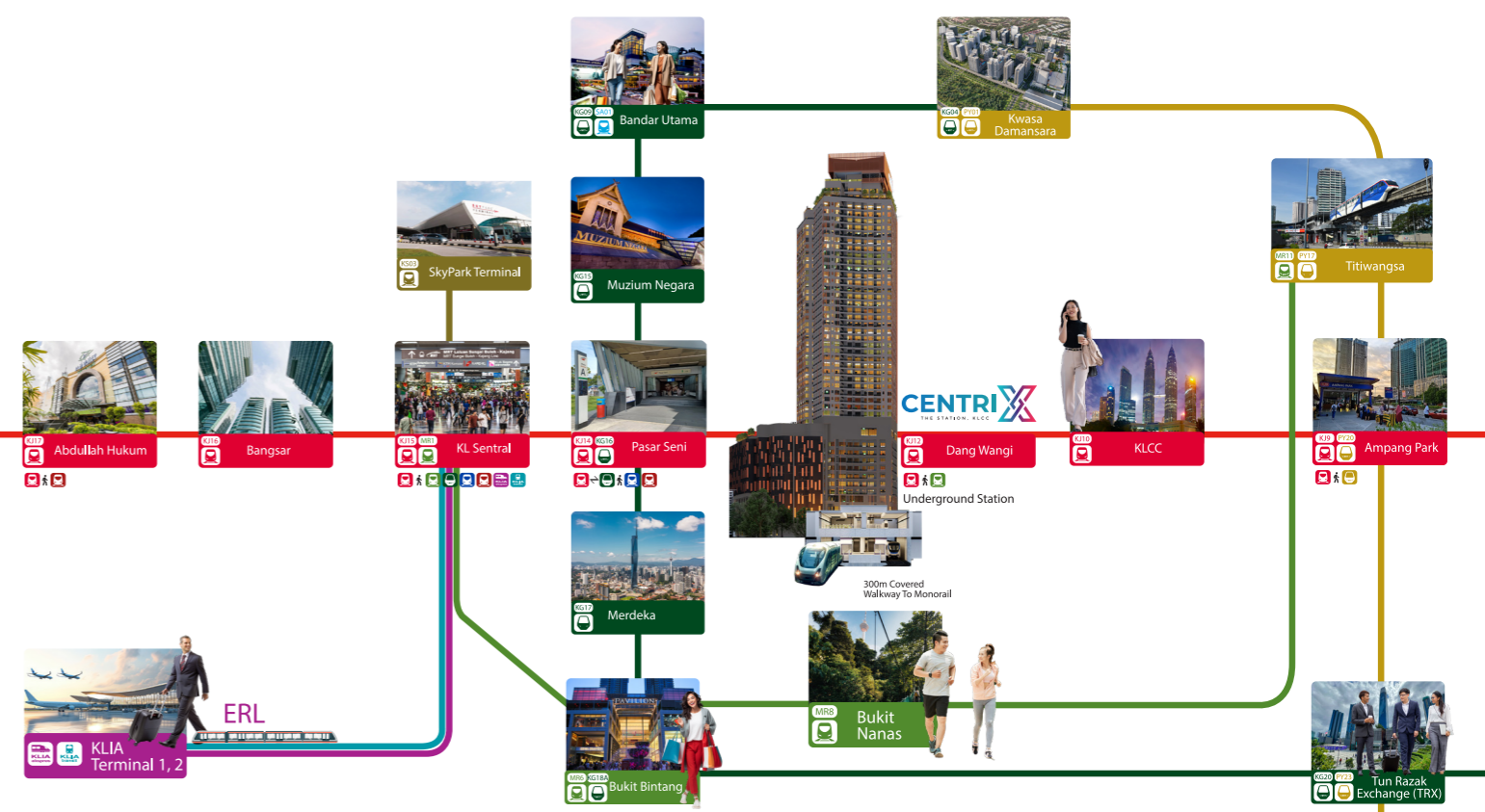
MERDEKA
118
2.5 km





← **K12** DANG WANGI **rapidKL** LRT Kelana Jaya Line
→ **MR8** BUKIT NANAS **rapidKL** KL Monorail Line


**ENJOYING
DIRECT LINES**
 In Tune with the City's Rhythm



Here, every line leads somewhere meaningful. Rail routes, road networks and pedestrian paths intersect to bring the pulse of the city directly to your doorstep. Positioned at the centre of it all, Centrix The Station is defined by connection — where daily routines and spontaneous journeys unfold with effortless ease.

From this central address, the city is always within reach. KLCC is just two stops away, while Bukit Bintang lies equally close in the other direction, placing Kuala Lumpur's premier shopping, dining and entertainment destination moments from home. Beyond these key districts, the rail network connects seamlessly to TRX, cultural landmarks and major urban nodes across the city.

In step with Kuala Lumpur's rhythm, Centrix The Station rises where connectivity, convenience and culture converge. With direct access to rail transit, major roads and surrounding urban amenities, every journey begins smoothly and every return feels intuitive. This is city living in motion — where movement feels natural and every destination is always within reach.

AN INTIMATE RHAPSODY

redrawing the city skyline

Centrix The Station makes a striking statement on the skyline, its facade setting a new urban rhythm. Sculpted to capture light, shadow and movement, the building's form becomes a dynamic composition that echoes the city's energy. Every line and surface is carefully considered, expressing balance, sophistication and harmony — shaping an architectural presence that is both commanding and composed.





GRAND ENTRANCE

*Artist Impression Only

THE PATTERN OF ARRIVAL

Every detail is thoughtfully considered to make your arrival seamless and unforgettable. From the choice of materials and textures to the architectural composition, Centrix The Station's entrance is designed to create a refined, commanding presence — welcoming you with understated elegance and timeless sophistication.



LOBBY LOUNGE

*Artist Impression Only



DROP OFF

*Artist Impression Only



A COMPOSITION of convenience

- Entertainment
- Hospitality / Medical
- City Conveniences
- International Landmark

Kuala Lumpur pulses with life — a city where modernity and tradition dance in harmony, creating a vibrant canvas of culture, opportunity and urban energy. Every street, skyline and corner tells a story — from the iconic Petronas Twin Towers soaring above, to bustling markets and aromatic street food lanes that awaken the senses.

Designed for the modern urban lifestyle, Centrix The Station captures this spirit of effortless living. Every convenience is thoughtfully composed, from curated boutiques and everyday essentials to inviting dining experiences. Whether picking up groceries, enjoying a casual meal or discovering hidden gems, life flows seamlessly — each day offering comfort, discovery and delight.

Centrix The Station is more than a destination. It is a rhythm of life, where work, leisure and exploration come together in perfect harmony.



International Schools



World-Class Medical Institutions



Michelin-Rated Cuisine



Branded Shopping Malls



Delicious Local Delicacies



Prestigious Nature Reserves

YOUR SOUNDTRACK

to the city life

Within Centrix The Station, every facility is composed like a layered symphony of comfort and well-being. Lounges, active zones, serene retreats and social pavilions intertwine to create a richly textured environment for rest and recreation. Each design element supports a balanced urban lifestyle, allowing residents to unwind, connect and rejuvenate within spaces thoughtfully orchestrated for every moment.

- ORCHESTRA GARDEN @ 11
- SONATA VERDE @ 45





HARMONIES IN ORCHESTRA GARDEN

spaces that move with you

At Centrix The Station, the rhythm of life extends beyond your home. Level 11 presents a curated sequence of gardens, lounges and open spaces — each step, pause and view thoughtfully composed to soothe, inspire and delight. Whether enjoying quiet reflection, playful moments or social gatherings, every space nurtures well-being and fosters a connection with nature, right in the heart of the city.



WHERE BELONGING

Discover Your Personal Rhapsody

From wellness decks to active zones and social lounges to sky terraces, every facility at Centrix The Station is crafted to elevate your daily rhythm. Whether you seek movement, relaxation or connection, each space infuses energy and life into every moment.



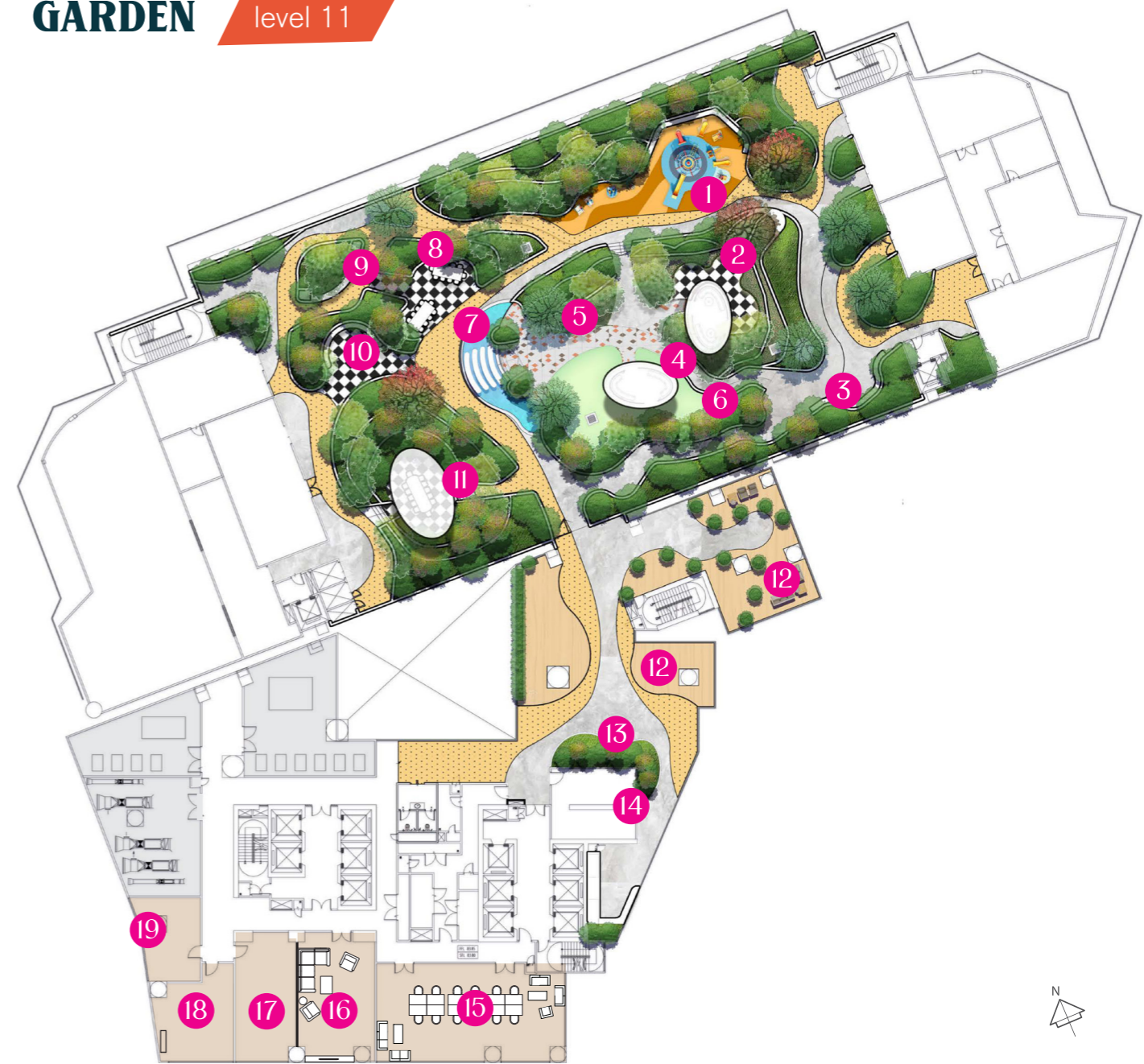
ECHOES OF SERENITY

Level 11

At Centrix The Station, serenity extends beyond the private realm of your home. Set above the city's constant movement, an elevated environment unfolds as a sequence of calm and considered moments. Here, spaces are shaped to support reflection, play and connection, allowing daily life to slow, breathe and find balance. Nature softens the urban rhythm, creating a tranquil retreat where well-being is nurtured and every moment feels gently composed.

*Artist Impression Only

ORCHESTRA GARDEN level 11



- | | |
|-----------------------------|-------------------------|
| 1 Birds Chirping Playground | 11 Harmonia Bar |
| 2 Tree Alcoves | 12 Seating Corner |
| 3 Riverie Garden | 13 Herb Garden |
| 4 Harmony Canopy | 14 Gourmet Kitchen |
| 5 Tune Trails | 15 Co - Working Lounge |
| 6 Mini Lawn | 16 Sing N' Play Station |
| 7 Rhapsody Reflective Pond | 17 Funtasia |
| 8 Tangerine Cloister | 18 Storypedia |
| 9 Chime Swings | 19 Games Station |
| 10 BBQ Grill Garden | |

DESIGNED TO FLOW WITH YOUR DAY

From energizing movement to focused productivity, from quiet reflection to bursts of creativity, every space at Centrix The Station is thoughtfully composed to support the full rhythm of your day. Designed to adapt to your needs, these environments inspire, refresh and empower you to live, work and create in complete harmony.



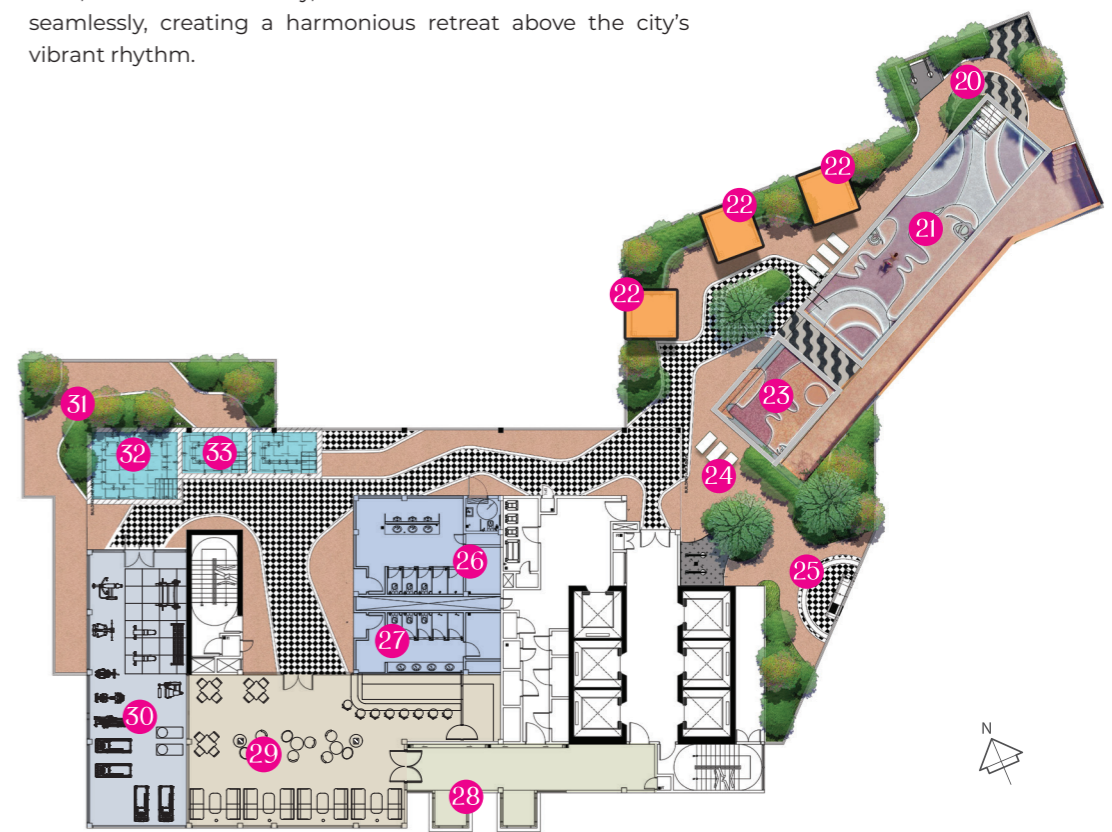


**MELODY
IN THE AIR**
Level 45

**SONATA
VERDE** level 45

High above the city, Level 45 invites you to move, relax and connect in spaces designed for life in motion. From sun-drenched decks and pools to terraces and cabanas, every facility is carefully orchestrated to elevate your experience.

Here, moments of activity, leisure and social interaction flow seamlessly, creating a harmonious retreat above the city's vibrant rhythm.



- 20 Sky Views
- 21 Aqua Sonata Pools
- 22 Tango Cabanas
- 23 Kids Pools
- 24 Melodic Sun Deck
- 25 BBQ Garden
- 26 Sauna
- 27 Changing Room
- 28 Cantilevered Viewing Deck
- 29 Sky Lounge
- 30 Sky Gymnasium
- 31 Outdoor Terrace
- 32 Sky Jacuzzi
- 33 Water Spa

*Artist Impression Only



BUSINESS SUITE
the tempo of success



EXECUTIVE SUITE
composed for the modern
professional



SUPERIOR SUITE
the harmony of exclusive living



TWIN FAMILIES SUITE
the melody of togetherness

COME HOME TO YOUR RHYTHM

The City Outside.
Our Music Inside.

People live differently. Some seek simplicity, some crave flexibility and some need room to grow. Centrix The Station celebrates these differences with a collection of homes and workspaces designed for evolving lifestyles. Families, young professionals and global travelers alike find spaces that match their pace and personal rhythm.

Future-ready, adaptable and thoughtfully crafted, these homes move with life as it shifts, expands and redefines itself.

CENTRIX **B.E.S.T** INVESTMENT

- BUSINESS SUITE
- EXECUTIVE SUITE
- SUPERIOR SUITE
- TWIN FAMILIES SUITE

SPECIFICATIONS

Structure	Reinforced Concrete Structure	
Wall	Selected Brick / Reinforced Concrete Wall / Lightweight Wall System	
Roof Covering	Reinforced Concrete Flat Roof / Metal Decking	
Ceiling	Plaster Ceiling & Paint / Skim Coat & Paint / Suspended Ceiling to Selected Area	
Windows	Aluminum Framed Glass Panel	
Doors	Timber Door / Plywood Flush Door / Aluminum Framed Glass Sliding Door	
Ironmongery	Quality Locksets	
Wall Finishes	Bathrooms	- Selected Tiles to Suspended Ceiling Height
	Kitchen / Pantry	- Coloured Glass / Painted Finish
	Internal Walls	- Painted Finish
	External Walls	- Painted Finish
Floor Finishes	Living & Dining	- Selected Tiles
	Kitchen / Pantry	- Selected Tiles
	Bathrooms	- Selected Tiles
	Bedrooms	- Selected Tiles
	Balcony (selected unit)	- Selected Tiles
	A/C Ledge	- Cement Render

Sanitary and Plumbing Fittings

Items	Unit Type																							
	S1	S2	S3	S4	S5	S5A	S6	S6A	S7	S8	S9	S10	S11	S11A	S11B	S12	S13	S14	S15	S15A	S16	S17	S18	S19
Water Closet	2	2	2	2	2	2	2	2	2	1	1	1	2	2	2	1	2	1	2	2	2	2	2	2
Wash Basin & Tap	2	2	2	2	2	2	2	2	2	1	1	1	2	2	2	1	2	1	2	2	2	2	2	2
Toilet Roll Holder	2	2	2	2	2	2	2	2	2	1	1	1	2	2	2	1	2	1	2	2	2	2	2	2
Shower Fitting	2	2	2	2	2	2	2	2	2	1	1	1	2	2	2	1	2	1	2	2	2	2	2	2
Bidet	2	2	2	2	2	2	2	2	2	1	1	1	2	2	2	1	2	1	2	2	2	2	2	2
Kitchen Sink & Tap	1	2	2	1	1	1	2	2	1	1	1	1	2	1	1	1	2	1	2	2	2	2	2	1
Washing Machine Drain	1	2	2	1	1	1	2	2	1	1	1	1	2	1	1	1	2	1	2	2	2	2	2	1

Electrical Installation

Items	Unit Type																							
	S1	S2	S3	S4	S5	S5A	S6	S6A	S7	S8	S9	S10	S11	S11A	S11B	S12	S13	S14	S15	S15A	S16	S17	S18	S19
Lighting Points	15	9	11	15	12	12	14	12	12	7	7	8	9	13	13	6	9	9	13	13	9	9	13	14
Power Points (13A)	8	11	13	7	9	9	11	11	7	6	6	7	11	8	8	6	13	5	13	13	11	13	13	7
Heater Point (20A)	2	2	2	2	2	2	2	2	2	1	1	1	2	2	2	1	2	1	2	2	2	2	2	2
Air Conditioner Points	4	2	2	5	3	3	2	2	4	1	2	2	2	4	3	1	2	2	2	2	2	2	2	4
Toilet Exhaust Points	1	2	2	1	2	2	2	2	-	1	1	1	1	2	2	1	2	1	2	2	1	2	2	-
TV Point	1	2	2	1	1	1	2	2	1	1	1	1	1	1	1	1	2	1	2	2	2	2	2	1
Data / Fiber Points	1	1	1	1	1	1	1	1	1	1	1	1	1	1	1	1	1	1	1	1	1	1	1	1
Kitchen Hood Point	1	2	2	1	1	1	2	2	1	1	1	1	2	1	1	1	2	1	2	2	2	2	2	1
Cooker Hob Point	1	2	2	1	1	1	2	2	1	1	1	1	2	1	1	1	2	1	2	2	2	2	2	1

STRATEGICALLY POSITIONED

for seamless connectivity



LANDMARK & ENTERTAINMENT

KL Forest Eco Park	300m
Hard Rock KL	400m
Heritage Row	400m
Quill City Mall	550m
Life Centre	600m
Saloma Link	800m
Petronas Twin Tower/ Suria KLCC	900m
Avenue K	1km
KL Tower	1.2km
Bintang Walk	1.5km
Pavilion Shopping Gallery	1.5km
Starhill Gallery	1.5km
Merdeka 118	2.5km
The Exchange TRX	2.7km

HOTELS

Renaissance Hotel	250m
Concorde Hotel	300m
Shangri-La	500m
Crown Regency	600m
W Hotel	800m
Mandarin Oriental KLCC	1km
Grand Hyatt KLCC	1.3km

EDUCATION INSTITUTION

St John International School	700m
Primerose Hill International School	2km
Eton International	2km
Victoria Institution	2km
Alice Smith School	3km

BANK/ CORPORATE TOWER

Wisma Denmark	100m
Menara Bangkok Bank	300m
Menara IMC	400m
Ministry of Tourism	440m
Menara Ambank	800m
Menara Standard Chartered	800m
Wisma Genting	800m
Menara Public Bank	1km

HOSPITAL/ MEDICAL INSTITUTION

KPJ Sentosa	1.8km
HSC Medical Centre	2.5km
Damai Service Hospital	2km
Prince Court Medical Centre	2km

Joint Collaboration



INTAN SEKITAR SDN BHD
A subsidiary of Crest Builder Holdings Berhad
201201011546 / 0985063T
2020201005719 / 0573383P



prIDE
A subsidiary of Prasarana Group
Prasarana Integrated Development Sdn Bhd
201101010054 / 0938203J



DAC
DAC DEVELOPMENT HOLDINGS SDN BHD
201501027043 / 1026971M

Let's Get Connected

+60 11 3313 9313

www.CentrixKLCC.com

No. Lesen Pemaju: 30833/08-2029/0175(A) · Tempoh Sah: 14/08/2024 – 13/08/2029 · No. Permit Iklan dan Jualan: 30833-1/01-2029/0048(N)-[S] · Tempoh Sah: 17/01/2026 – 16/01/2029 · Hak Milik Tanah: Pajakkan 99 Tahun (18 Disember 2113) · Bebanan Tanah: TIADA · Tarikh Dijangka Siap: JUL 2029 · Pihak Berkuasa yang Meluluskan: Dewan Bandaraya Kuala Lumpur · No. Rujukan: BP 14 OSC 20230774(20) · Sekatan Kepentingan: Tanah ini tidak boleh dipindahmilik, dipajak, dicagar atau digadai tanpa kebenaran Jawatankuasa Kerja Tanah Wilayah Persekutuan Kuala Lumpur · Diskaun Bumiputera: 5% · Jumlah Unit: 857 unit · Harga: RM907,800.00 (Min) – RM2,194,800.00 (Maks) · Luas Binaan: 52 mps – 111 mps · Jenis: SOHO · Pemaju: INTAN SEKITAR SDN BHD (985063-T), No. 72 Jalan Ampang, 50450 Kuala Lumpur. No. Tel: 6011 3313 9313 · IKLAN INI TELAH DILULUSKAN OLEH JABATAN PERUMAHAN NEGARA · MAKLUMAT PEMAJU BOLEH DISEMAK DI PORTAL TEDUH KPKT.GOV.MY