

CAVARIA 56
(Total : 56 Units)

For Sales Enquiries : **+603-7982 8000 / +6011-2814 0969**

Developer :



Wisma Abadi Man Nien
No 6 - 1A, Jalan 3/109C Taman Abadi Indah,
Off Jalan Klang Lama, 58100 Kuala Lumpur.
Tel : +603-7982 8000

www.abadiheights.com.my

www.facebook.com/abadiheights.0

Financier:



A Member of:



CAVARIA 56

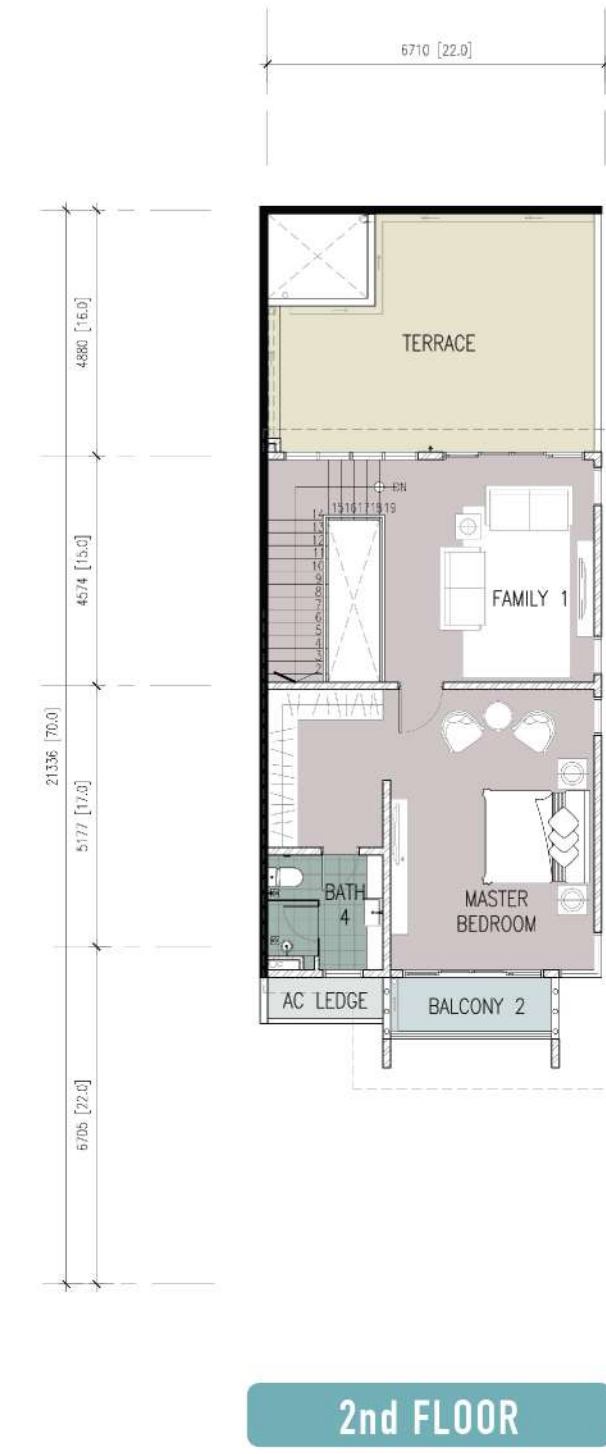
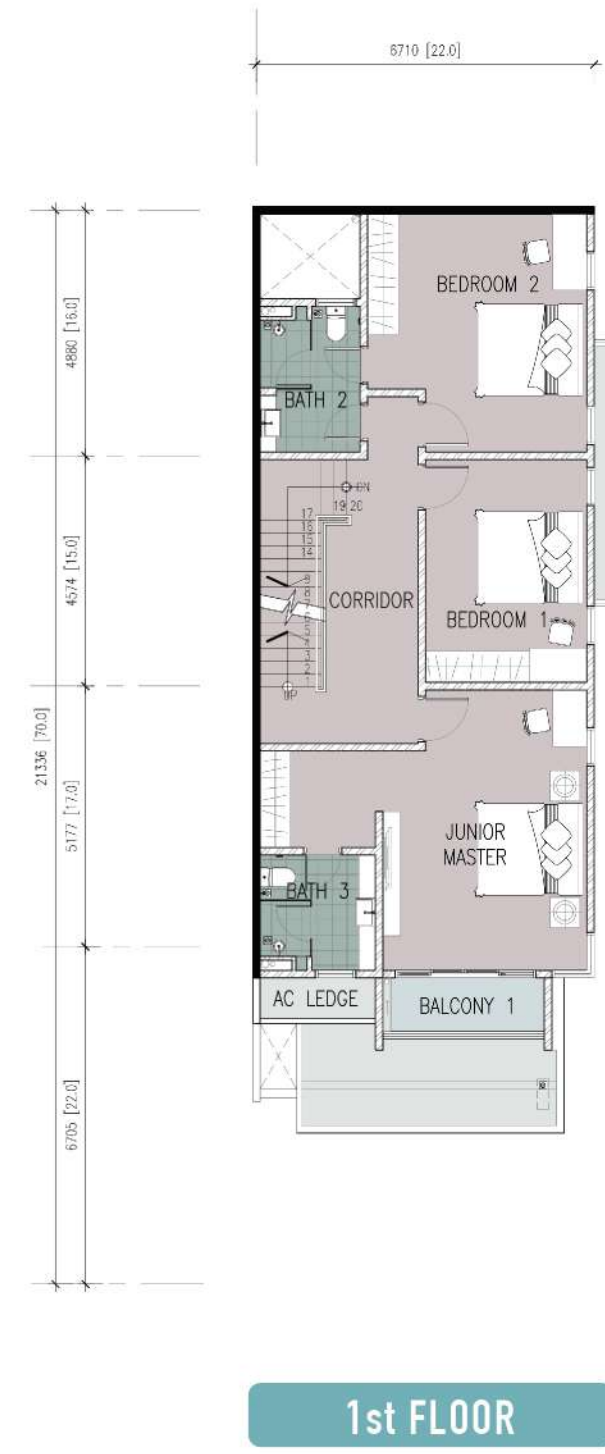
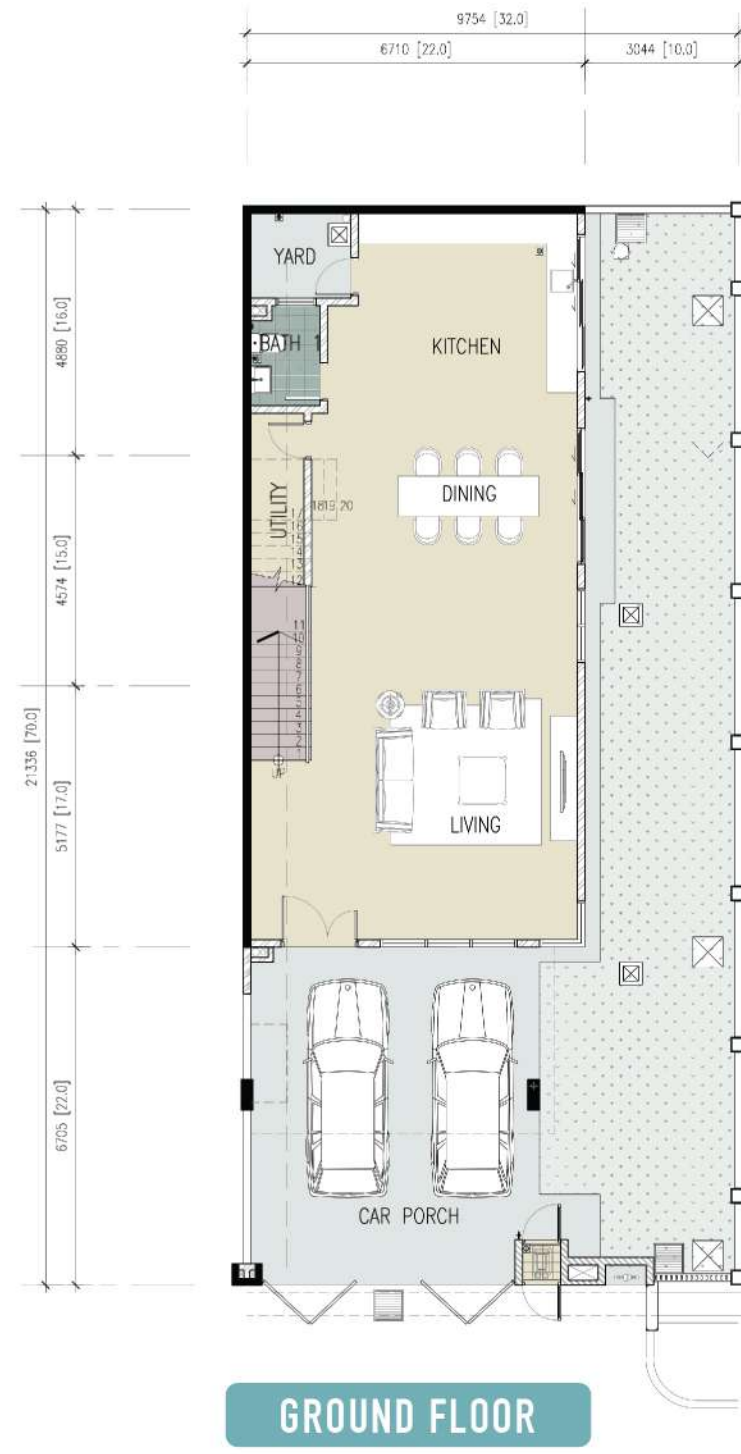
3 Storey LINKED-VILLA
32' x 70' (56 Units)

Low Density Design Embracing Modern Architecture

Serenity takes centrestage at the modern contemporary enclave called CAVARIA 56

Serenity and spacious surroundings come together in a modern contemporary setting. Cavaría 56, representing 3 Storey Linked-Villas usher in an elevated lifestyle for the modern family to grow in spacious surroundings. Attention to detail is a given at the modern contemporary designed units. Meanwhile, a spacious balcony on the master bedroom and junior bedroom level in modern interior settings overlook the panoramic greenery outside. What's more, the master bedrooms accommodates a living space or study area for added comfort. Limited to only 56 units with a modern contemporary 32' x 70' layout, this is the awaited lifestyle for the discerning creme de la creme of society.

CAVARIA
3 Storey
Linked-Villa
32'x 70'
3,420 sq.ft.
(56 Units)



| SPECIFICATIONS | | |
|-------------------------|---|---|
| STRUCTURE | Reinforced concrete frame/ Steel frame | |
| WALLS | Bricks with cement plaster finish | |
| ROOFING COVERING | Metal roof with steel truss system/ Reinforced concrete | |
| STAIRCASE | Reinforced concrete staircase with railing | |
| CEILING | Plaster ceiling with painting/ Skim coating | |
| FLOOR FINISHES | Living, Dining | - quality ceramic tiles |
| | Kitchen | - quality ceramic tiles |
| | Utility | - quality ceramic tiles |
| | Yard | - cement render |
| | Car porch | - concrete stamping |
| | Staircase & Landing | - laminated timber flooring |
| | Master Bedroom, Junior Master Bedroom | - laminated timber flooring |
| | Bedroom 1 & 2 | - laminated timber flooring |
| | Corridor | - laminated timber flooring |
| | Family Area | - laminated timber flooring |
| | Bath 1, 2, 3 & 4 | - ceramic tiles |
| | Balconies | - ceramic tiles |
| | Roof Terrace | - ceramic tiles |
| | A/C Ledge | - cement render |
| WALL FINISHES | Kitchen | - ceramic wall tiles/ plaster and paint |
| | Yard | - plaster and paint |
| | Bath 1, 2, 3 & 4 | - ceramic wall tiles |
| | Internal Walls | - plaster and paint |
| DOORS | Main Entrance Door | - decorative timber door |
| | All Other Rooms | - timber door |
| | Living, Dining | - aluminium framed glass sliding door |
| WINDOWS | - aluminium framed with glass | |
| IRONMONGERY | - quality locksets | |
| SANITARY FITTINGS | Kitchen | - kitchen sink & taps |
| | All Bathrooms | - water closet, wash basin & taps |
| ELECTRICAL INSTALLATION | Lighting points | - 38 nos |
| | Gate lighting points | - 2 nos |
| | Ceiling fan points | - 7 nos |
| | 13A power points | - 43 nos |
| | 15A A/C points | - 7 nos |
| | Water heater points | - 3 nos |
| | Auto gate point | - 1 nos |
| | Television point | - 4 nos |
| | Door Bell Point | - 1 nos |
| | Telephone point (pair) | - 1 nos |
| | Fiber Wall Socket | - 1 nos |
| FENCING | Mild steel gate and fencing with brick wall c/w refuse chamber and letter box | |