



Escape to

Est8

SEPUTEH

A State of Difference





Welcome
to Est8



THE EDGE
Top Property
Developers Awards
2020

THE EDGE
Top Property
Developers Awards
2021

THE EDGE
MALAYSIA
Property Excellence
Awards 2021 | Winners



THE EDGE - PEPS
MALAYSIA
Value Creation Excellence
Award 2021 | Non-Residential

“Our distinctive ‘Shared Value’ approach to property development is now being widely recognised at the highest levels.

As a property developer, Eupe is committed to being different by **offering our buyers outstanding difference**. We believe home buyers deserve more than standard homes and facilities. We believe they should be rewarded with homes and communities **infused with design excellence and lifestyle innovation**.

Our distinctive ‘Shared Value’ approach to property development - based on giving **more innovative features and facilities at an affordable price** - is now being widely recognised at the highest levels.

Eupe’s first residential development in Kuala Lumpur - Novum @ South Bangsar - has won three prestigious property awards. Our second development in Malaysia’s capital - Parc3 @ KL South - has also been recognised for its outstanding **‘green community’ design**.

We are committed to raising the bar on property development with a deep commitment to building trust with all our buyers. That’s why we are excited to offer you Est8 - a ground-breaking concept in Malaysian property development that joins community, sustainability and art into a distinctive enclave within walking distance of many of the city’s **most sought-after shopping, transport and entertainment facilities**.

As you can see throughout this brochure, we have been painstaking in our vision of delivering the very best in contemporary living and design within an inspired **enclave of serenity and peace** for you and your family.

We are particularly proud of our collaboration with firms that rank among **the best interior and landscape designers in Asia** to help us realise our vision for Est8 - a vision that aims to **create and sustain lasting value** for our buyers.

I commend Est8 to you and hope you can share in the effortless livability and well-being that it offers.

Dato’ Beh Huck Lee

Group Managing Director
Eupe Corporation Berhad



A STATE OF Style

“Magic exists. Who can doubt it, when there
are rainbows and wildflowers, the music of
the wind and the silence of the stars?”

- Nora Roberts -

Imagine a place designed for dreams.

A home where award-winning style
meets lifestyle innovation.

Where every facility and feature sets
new thresholds of ‘distinctive
difference’ - at an affordable price.

A place defined by the magic of design
imagination and artistic enchantment.

Let Est8 become
your enclave of style



A STATE OF Success

“Life is a fairytale if we know
how to write the story.”

- Debasish Mridha -

Imagine a home in a neighbourhood
sought by many.

A place where your personal journey is
rewarded with distinctive and
imaginative difference.

Where your aspirations are given shape
through the artistic visions of top
architectural and landscape designers.

Let Est8 become
the vision of your success

A STATE OF Serenity

“Peace is always beautiful”

- Walt Whitman -

Imagine a sanctuary which is also
your home.

A place where meandering walks and
enchancing art set amidst tall forest
trees become your enduring dream.

Where you can retreat from the city
into a village of peaceful reflection and
tranquil times with family and friends.

Let Est8 become
your haven of serenity

YOUR HAVEN OF Security

“Home lives in all of us. The safe place where we can go as we are.”

- Maya Angelou -

Est8 is your safe haven in an unpredictable world.

Your home of serenity and security threaded with magical spaces, lush gardens and meandering walks inspired by childhood imagination.

A place to dream, discover and imagine... yet just a stone's throw away from the best KL offers in entertainment, shopping and connectivity.

A safe haven that's also a perfectly crafted community

Iconic Location



BANGSAR SOUTH

KL ECO CITY

MID VALLEY CITY



Hospitals

• IHEAL Medical Centre	450 m
• Pantai Hospital Kuala Lumpur	1.5 km
• Taman Desa Medical Centre	2 km
• LifeCare Diagnostic Medical Centre	2 km
• University of Malaya Specialist Centre	3 km
• Columbia Asia Hospital	5 km

Education

• Valley International School	1.5 km
• Havil International School	1.5 km
• Global Indian International School	1.5 km
• SMK Taman Desa	1.5 km
• Sri Desa International Secondary School	1.5 km
• Methodist College	2 km
• Kuen Cheng High School	2 km
• Alice Smith School - Primary Campus	2.5 km
• Alnoor International Schools	2.5 km
• University of Malaya	3 km
• MAHSA Avenue International College	3.5 km
• Tsun Jin High School	3.5 km

Public Transportation

• Mid Valley KTM Station	300 m
• Seputeh KTM Station	400 m
• Abdullah Hukum LRT Station	800 m
• Bangsar LRT Station	1 km
• KL Sentral	2 km

Shopping

• Mid Valley Megamall	300 m
• The Gardens Mall	500 m
• Nu Sentral	2 km
• KL Gateway Mall	2 km
• The Sphere & Nexus Bangsar South	1.5 km
• Bangsar Village	1.5 km
• Bangsar Shopping Centre	3 km
• KLCC	6 km

Recreation

• Kuala Lumpur Butterfly Park	3.5 km
• Kuala Lumpur Bird Park	3 km
• Perdana Botanical Garden	3 km

Golf Clubs

• The Royal Selangor Golf Club	6 km
• TPC Kuala Lumpur	5 km

Connectivity

- Federal Highway / Lebuhraya Persekutuan
- SALAK Highway
- Jalan Syed Putra
- Jalan Klang Lama
- Setiawangsa-Pantai Expressway (SPE)

Covered walkway to Mid Valley & LRT / KTM Station

KL
SENTRAL

KL
TOWER

KLCC

PNB
118

THE
EXCHANGE 106

Est8
SEPUTEH
A State of Difference

Est8 is your... State of Difference

Distinctive Facilities

Distinctive difference defines Est8 with premium facilities designed for **every lifestyle pursuit and pleasure**. Est8's 40-plus facilities - designed around the iconic **Valley of Dreams** concept - include:

- A celebrity kitchen to **entertain and dine** with family and friends.
- A state-of-the-art business centre with **everything** you'll need to work or study from home.
- A **50-metre lap pool** and an all-purpose gym.
- An array of artistic gardens, play areas and winding trails to delight the senses and inspire your imagination.

Iconic Location

Est8 is located **only a few hundred metres from Mid Valley Megamall and The Gardens Mall**. That means you'll be on the doorstep of one of Klang Valley's **most exciting shopping and entertainment precincts**.

Award-Winning Design

Eupe pushes its award-winning design boundaries even further with Est8 to craft a vibrant, one-of-a-kind residential precinct with a **uniquely imaginative lifestyle offering**.

Connected to Everything

Together with its iconic location, close to major road links and the LRT, Est8 offers the **best in digital connectivity**. Access to fast internet and work-at-home facilities, plus **Est8's very own app** to pay utility bills, book facilities and arrange for home maintenance.

Floating Garden & Cloud Maze Sky Gardens





Sustainable Living

Est8 offers **the best in sustainable living**. Its buildings are **naturally cooled** with clean, healthy air. Est8's masterplan also includes **extensive green spaces** to create a community that celebrates our natural environment.

Affordable Luxury

Eupe's design approach infuses every aspect of our developments with what we call *Shared Value*. This means that Est8 gives you **more design excellence and innovative lifestyle facilities** at an affordable price.

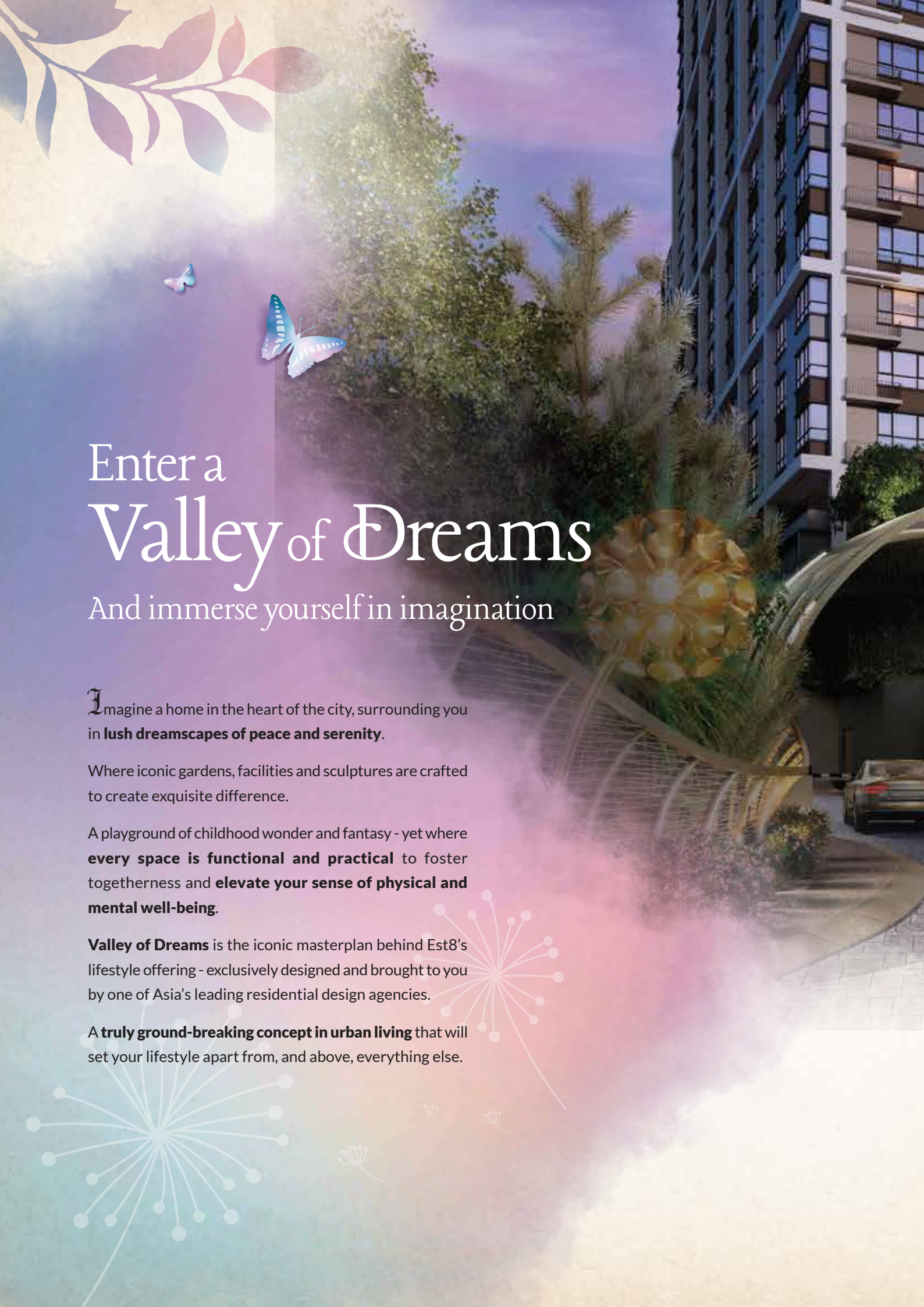
A Safe & Secure Haven

We've designed Est8 to be your **secluded sanctuary of well-being** with an imaginative array of private spaces, hidden gardens and secluded walks. It also offers a number of Covid-safe innovations and features to help **safeguard your health**.

Inspiring Art

At Eupe, we believe **public art** should be a central and distinctive part of residential design. At the heart of Est8's design concept are a myriad of eye-catching public art and innovative sculptures that will serve as **signature icons** for Est8's distinctive blend of imagination and lifestyle.





Enter a Valley of Dreams

And immerse yourself in imagination

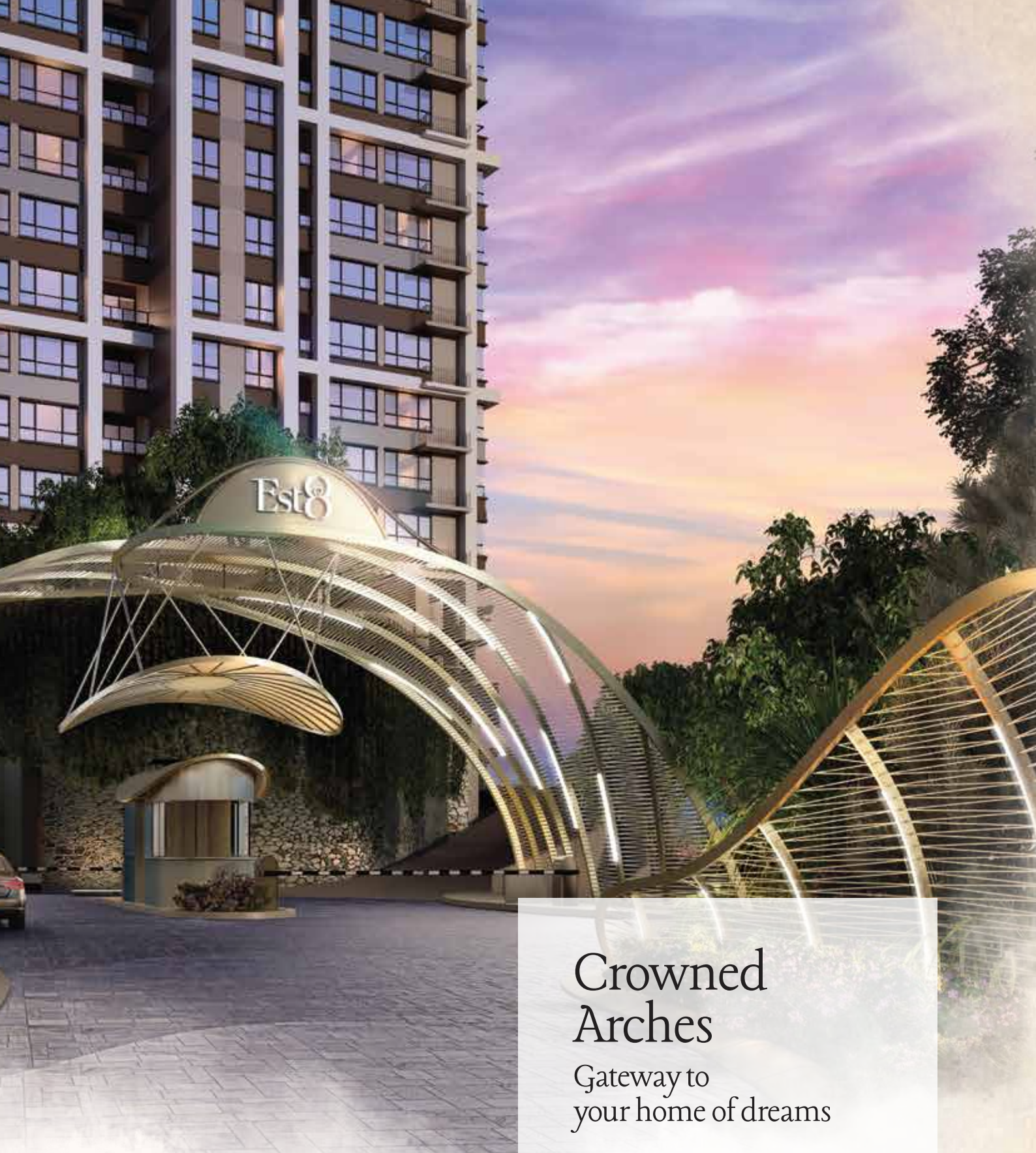
Imagine a home in the heart of the city, surrounding you in **lush dreamscapes of peace and serenity.**

Where iconic gardens, facilities and sculptures are crafted to create exquisite difference.

A playground of childhood wonder and fantasy - yet where **every space is functional and practical** to foster togetherness and **elevate your sense of physical and mental well-being.**

Valley of Dreams is the iconic masterplan behind Est8's lifestyle offering - exclusively designed and brought to you by one of Asia's leading residential design agencies.

A truly ground-breaking concept in urban living that will set your lifestyle apart from, and above, everything else.



Crowned Arches

Gateway to
your home of dreams

The entry to Est8 is the perfect symbol to show **you have arrived.**

Entering through the iconic Crowned Arches, you'll know you have arrived not just to a home of serene comfort and style.

You will also arrive at **a pinnacle of difference** - a home set apart from every other by its commitment to **making living an art form.**





Facilities to elevate your lifestyle

Eupe's award-winning design approach means all lifestyle facilities at Est8 have been **carefully masterplanned and integrated into the project's overall iconic design.**

That means every facility - from the 50 metre lap pool, multipurpose hall and business centre - **seamlessly combine the functional with the artistic.**

The facilities - located in one expansive yet integrated area - are planned around three distinctive enclaves to elevate the daily flow of leisure, relaxation and togetherness into an art form.

Each facility has been designed to make a **bold architectural statement in itself**, creating iconic design and lifestyle difference which sets Est8 apart .



**The Kaleidoscope
The Burrows
The Wonderglades**



LEVEL 12

1. Kaleidoscope Kitchen (Celebrity Kitchen)
2. Kaleidoscope Courtyard (BBQ Area)
3. Secret Burrows (Business Centre)
4. Grand Burrow (Multipurpose Hall)
5. Outdoor Fitness Area
6. Bubble Dome (Gymnasium)
7. Changing Room
8. Kids Pool
9. Kids Fountain
10. Outdoor Showers
11. Whirlpool
12. Sundeck
13. Waterfall
14. Lap Pool
15. Beach
16. Shallows



3 facilities precincts



The Kaleidoscope

“Life is like an ever-shifting kaleidoscope - a slight change, and all patterns alter.”

- Sharon Salzberg

In The Kaleidoscope precinct, light and colour is turned on its head. Familiar pieces of everyday life are reassembled into **stunning new visual harmonies and combinations**. Where you can **join with family and friends on a journey of the imagination** and new creative patterns and possibilities come to vibrant life.



Kaleidoscope
Courtyard



Kaleidoscope Kitchen

Kaleidoscope Kitchen

“Dining should be a delightful and beautiful experience.”

- Gauri Khan

Entertain and dine privately with family and friends in the exclusive **Kaleidoscope Kitchen** surrounded by expansive views of the surrounding landscape. Inspired by the view through a kaleidoscope, the dining area is **encased in fluted glass** and overhung with pendants that turn the world outside into a visual dream, **elevating culinary experiences into iconic illuminations.**

Kaleidoscope Courtyard

“At the height of laughter, the universe is flung into a kaleidoscope of new possibilities.”

- Jean Houston

Enter this whimsical outdoor dining area with its spacious dining setting and a barbecue pit through a kaleidoscope tunnel.

A **dream-like enclave** where giant dandelion sculptures sing you ethereal music. Where light reflecting from the prisms of coloured glass arranged around the courtyard **relax and regenerate you.**

The Burrows

“Poetry is going on all the time inside, an underground stream”

- John Ashbery

The Burrows is where you'll find Est8's business centre and multipurpose hall.

Both facilities are designed as natural caves - underground spaces which take you to **worlds that energise, inspire and delight.**



Secret Burrows



Grand Burrow



Grand Burrow

“This is the power of gathering: it inspires us - delightfully - to be more hopeful, more joyful, more thoughtful. In word, to be more alive”

- Alice Waters

- **The Multipurpose Hall** - is designed as a cavern, where you can bring together friends and family to **cherish and celebrate all those special occasions** and gatherings.

The hall can also be **easily reconfigured into smaller spaces**. Designed as a burrow with openings to let in light and vegetation, the entire space is to transport you to an alternate reality.

Secret Burrows

“Nothing energizes me more than to burrow myself under a pile of received wisdom and emerge triumphant with the truth”

- Timothy Nash

- **The Business Centre** - is designed as a series of burrows where you can immerse yourself in business, study or any pursuit which requires quiet and concentration.

Equipped with the latest in office technology, work stations and meeting rooms, the **Secret Burrows** is the perfect place to make your **goals and inspirations a reality**.

The Wonderglades

“If there is magic on this planet,
it is contained in water”

- Loren Eiseley

Glades are serene places yet full of life, invigorated by water. Within this precinct, you'll find Est8's **50-Metre lap pool** set among lush gardens and winding paths. There's also the kid's wading pool and fountain, a sundeck, and even a beach. The ideal place to **let your thoughts float away**.



Bubble Dome

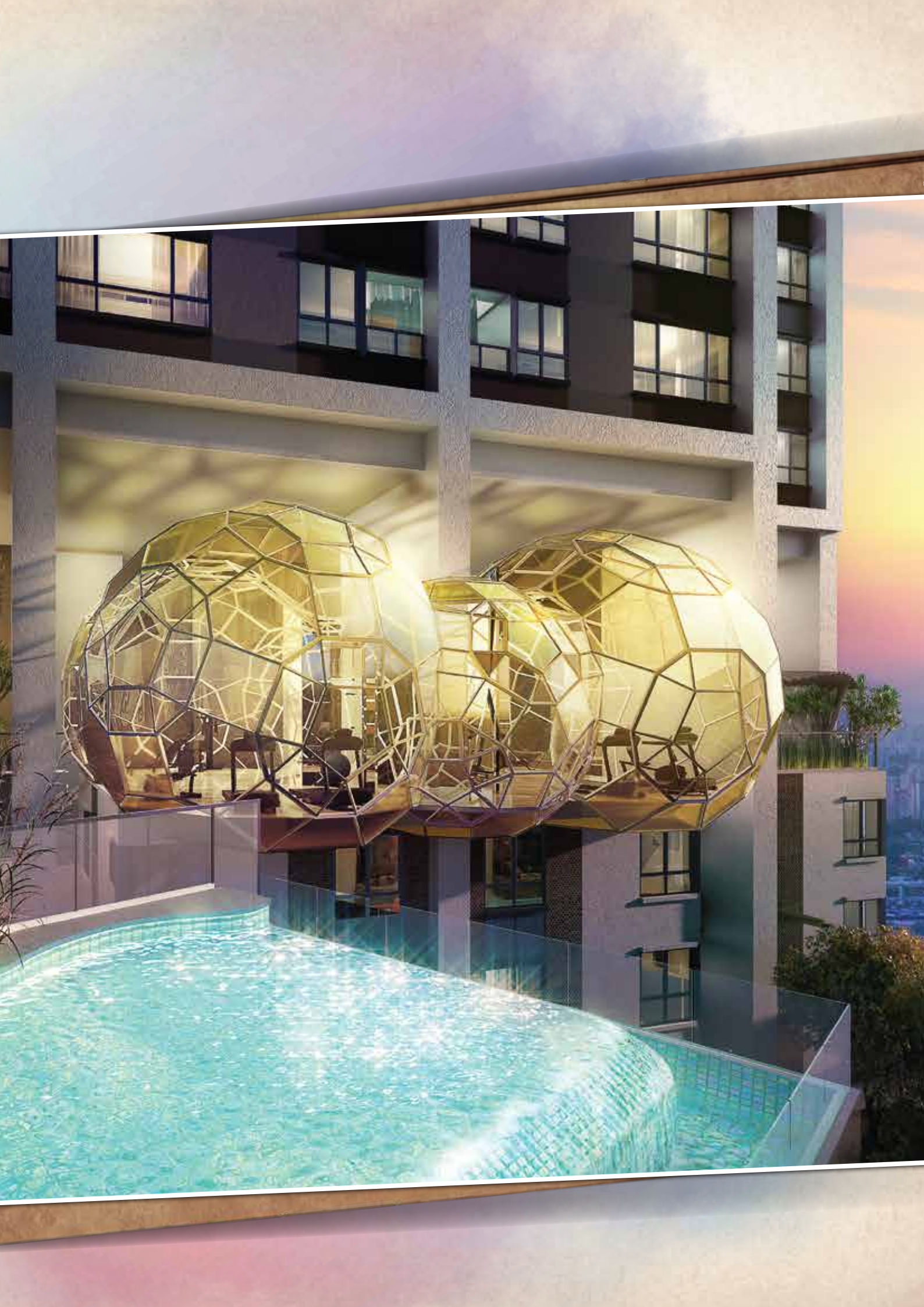
“The purpose of training is to polish the spirit.”

- Morihei Ueshiba

Designed in the shape of twin bubbles, Est8's **gymnasium** boasts cardio, strength and stretch zones, all with the latest equipment to **give your fitness routine an energetic lift**. There's also an **outdoor gym** next door where the fitness equipment doubles as public art for extra inspiration.

Bubble Dome







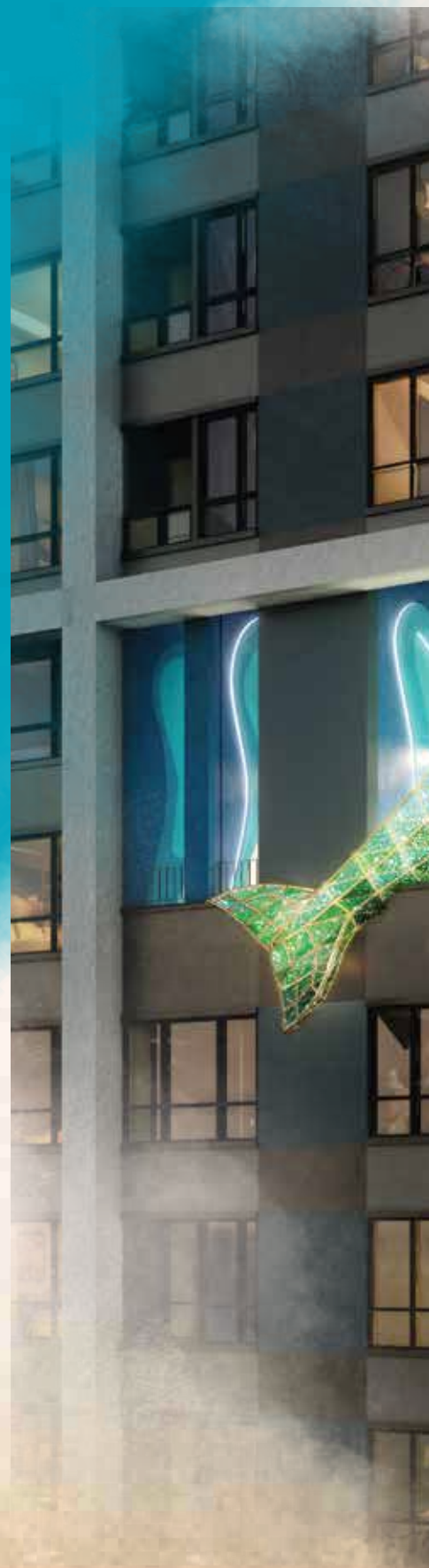
Gardens that Soothe Your Senses

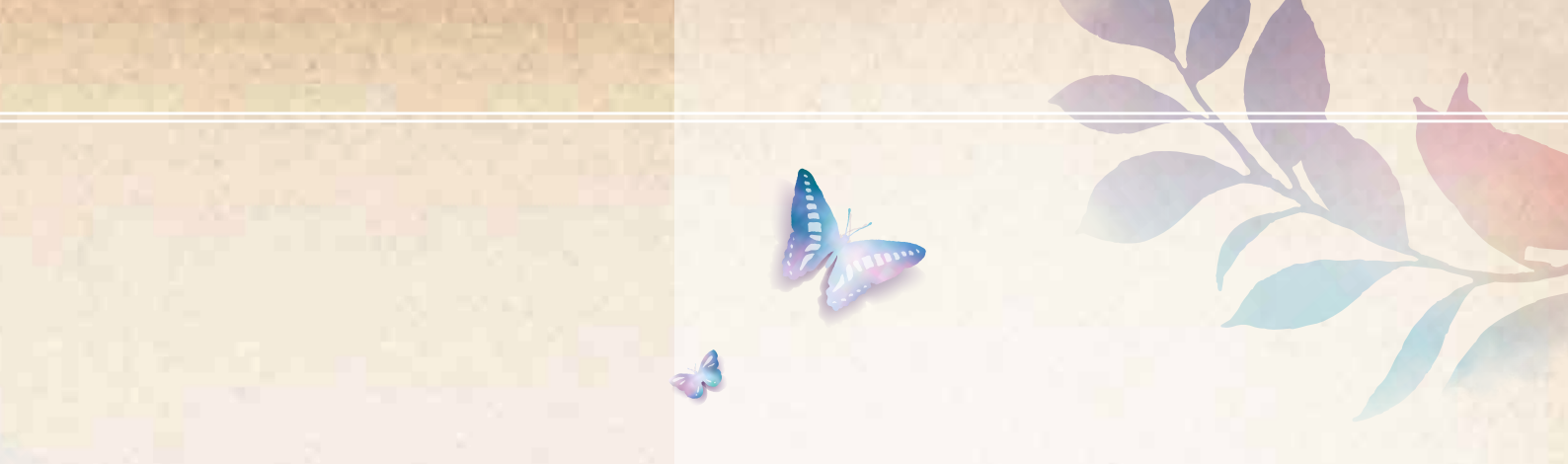
Within Est8, we've crafted gardens that celebrate community and nurture serenity and imagination.

A world away from a world of uncertainty and distraction, Est8's gardens and natural spaces combine and redefine the concepts of '**urban art**' and '**green community**'.

They are not only pleasing to the eye; they are painstakingly designed to be **functional** spaces that **elevate your physical and mental well-being** to new heights.

Combining the best in innovative, contemporary landscaping and garden design, Est8's gardens provide a secure and serene sanctuary of **dreamscapes**, allowing your **imagination - and lifestyle - to soar**.





Paradise Blue
Sky Garden

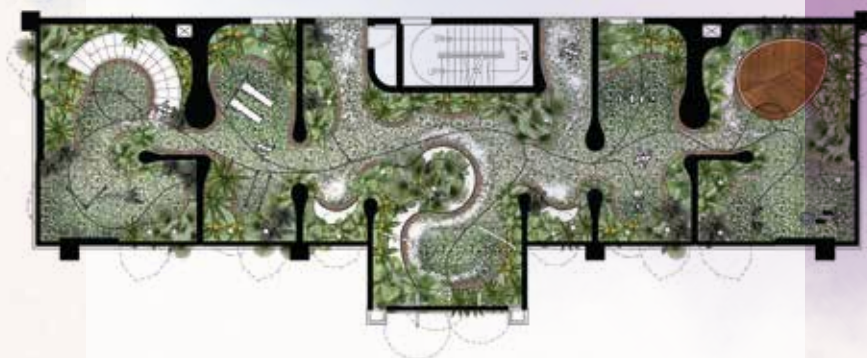
Floating Garden

“Nature is painting for us,
day after day, pictures of infinite beauty.”

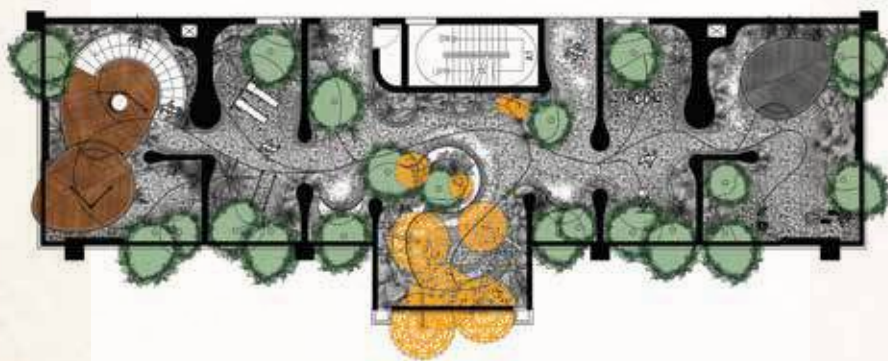
- John Ruskin

BLOCK A - LEVEL 25 to 27

Inspired by the **beauty of the tropical rainforest**, the Floating Garden immerses you in a **surreal dreamscape of tall vegetation and dandelions** to motivate and uplift. Relieve your muscles in the stretch zone, sweat out your energy at the cardio or strength zone, or find peace of mind on the yoga deck while your eyes take in the skyline.



Lower



Upper







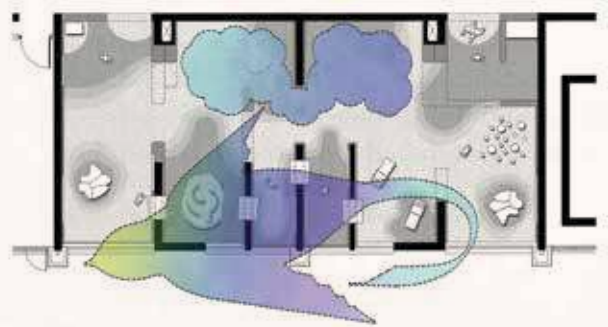
Cloud Maze

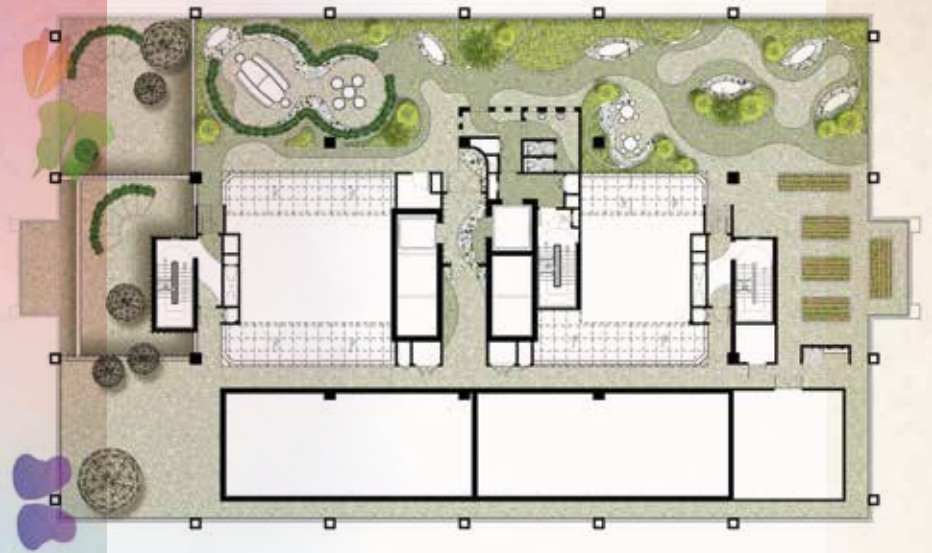
“Clouds are on top for a reason.
They float so high because
they refuse to carry any burden!”

- Jasleen Kaur Gumber

BLOCK A - LEVEL 29 to 30

Carefully crafted as a **cloud wonderland in the sky**, Cloud Maze is encased in a giant bird that has taken flight from the rainforest below. It's filled with interactive, fun and educational play areas for children to develop their thinking and physical skill, like the winding Cloud Slides and the Cloud Net for gentle climbing experiences to **build strength and balance**.





Flutter Meadow

“Just living is not enough,” said the butterfly,
“one must have sunshine, freedom and a little flower.”

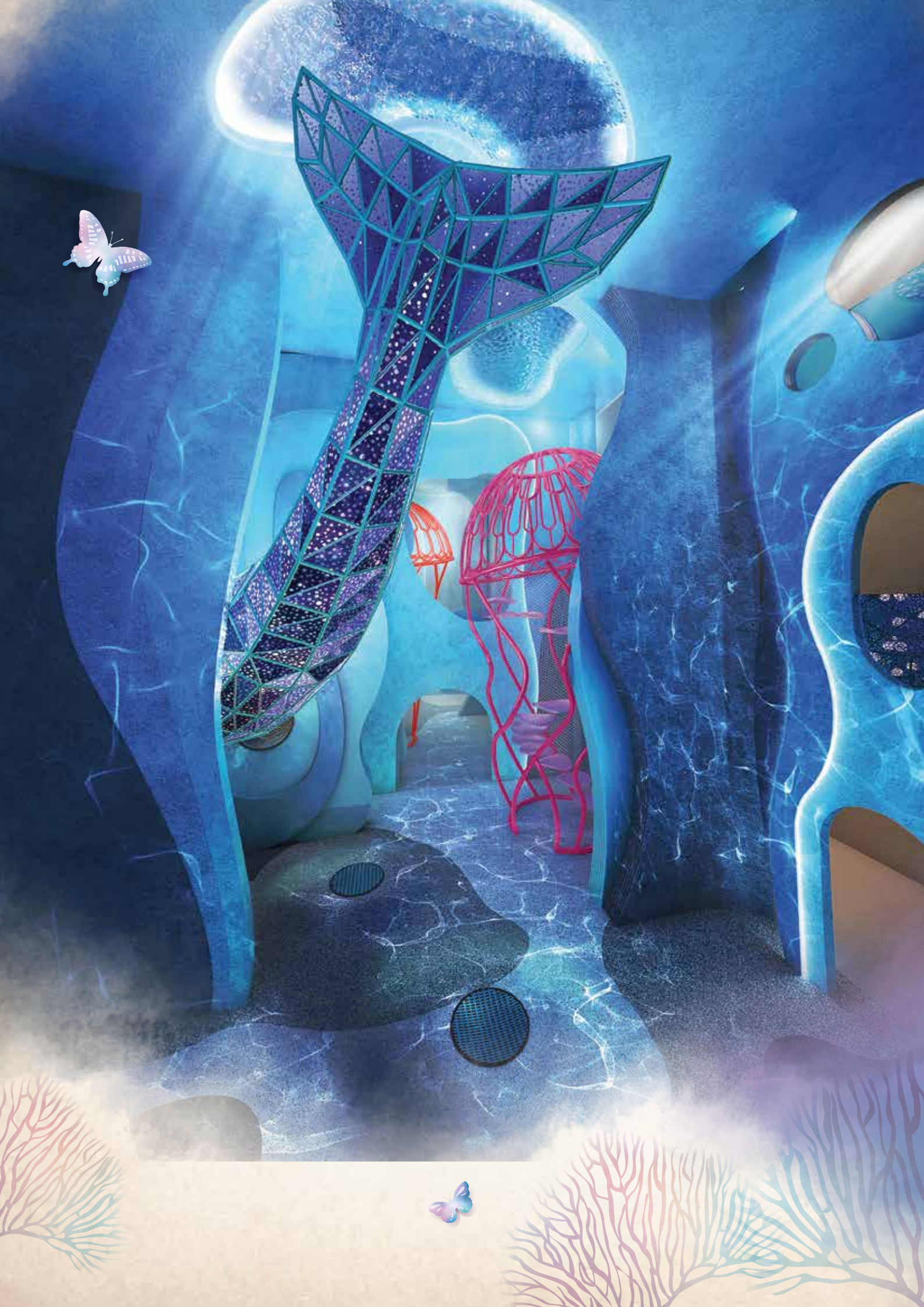
- Hans Christian Andersen

BLOCK A - ROOFTOP

At the very top of Block A, Flutter Meadow gives you a **perfect window on the world below**. The Flutter Meadow is a culmination of the sculptural tale that Est8 weaves. It is where the dandelions grow and butterflies emerge from their cocoons to **inspire your dreams and hopes**, while you indulge in open-air alfresco sky dining with your friends and families.

An array of **health-enhancing herbs and organic vegetables** are available for you to harvest, to connect you with nature and the rich bounty it offers.





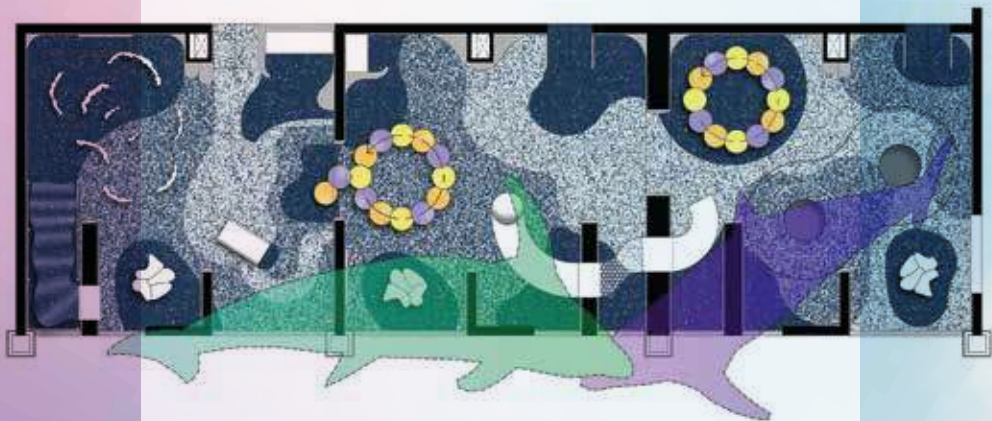
Paradise Blue

“The sea, once it casts its spell,
holds you in its net of wonder forever.”

- Jacques Costeau

BLOCK B - LEVEL 28 to 30

Inspired by the **mysteries of oceans deep**, Paradise Blue is a **playground of azure wonder** with giant fish sculptures, undersea caves and climbing nets. There's something for every child - an exploratory coral maze, bouncy trampolines, sensory mirrors, ocean floor walk and slides to **develop their coordination skills and senses**.





Garden of Giants

"If I have seen further it is by standing
on the shoulders of giants."

- Isaac Newton

BLOCK B - LEVEL 36 to 37

In this Sky Garden - designed as an integrated space for active workouts like cardio, strength and yoga - everything is **larger than life**. Giant mushrooms stand as sentinels, dandelions soar above you. Each sculpture serves as an iconic inspiration for physical exercise and good health, as well a focal point to reflect on the **gigantic wonder that is nature**.







rails that Transport You to Another World

Imagine living in a home where you can step outside your door and walk among **dreamscapes** of flowers, lush greens and magnificent forest trees.

At Est8, the landscape is truly inspired by **dreams of nature**, where everything is a **state of mind**.

Follow paths that thread through wooded areas and discover special places that ground your mind in the serenity of nature yet allow **your senses to soar**.

Est8's gardens, trails and **tree-filled landscapes** are carefully curated to encourage dreaming and to refresh the soul.



— A Walk in the Woods

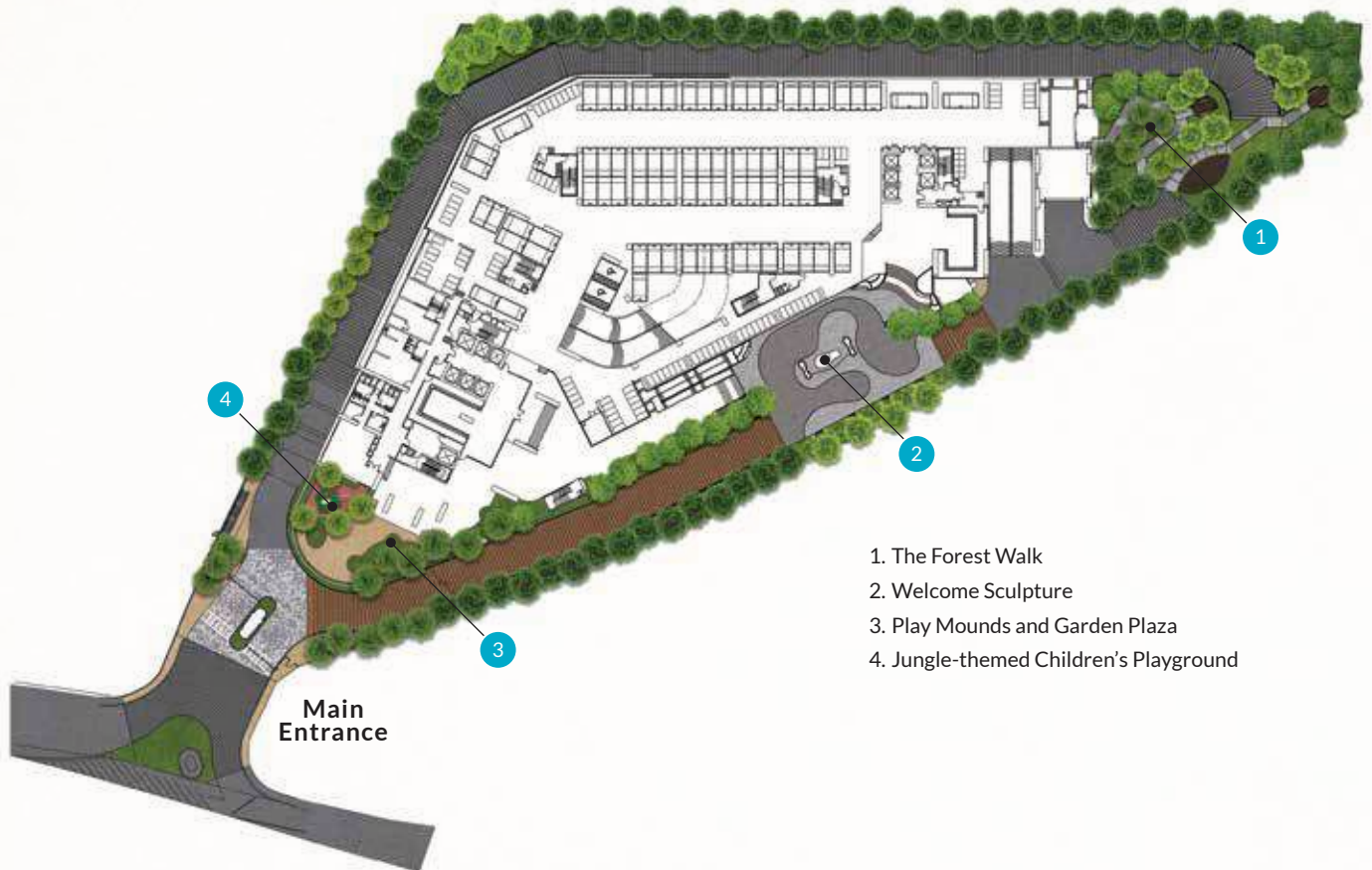




A Walk in
the Woods

GROUND FLOOR

Main Lobby (The Relaxing Walk)



1. The Forest Walk
2. Welcome Sculpture
3. Play Mounds and Garden Plaza
4. Jungle-themed Children's Playground

The Forest Walk

The Forest Walk combines an environment for individual contemplation among forest scenes, with communal areas to **bring you and your loved ones closer to the timeless rhythms of nature.**

The Cascading Steps usher you into verdant, lush greens and treescapes with **rest areas in the shape of cocoons** to give you a sense of being fully immersed in a natural, timeless space.

Serene paths, designed to surround you with nature, thread through wooded areas and lush greens right at your doorstep.

The Relaxing Walk

Be introduced to the **sanctuary-like world** of Est8 when you embark on the Relaxing Walk.

The walk transports you effortlessly to your new urban haven where a welcoming sculpture - representing the **elevation of your deepest wishes** - greets you at the Est8 Main Entrance and Lobby area.

Follow the path leading to the children's playground and Playmound Gardens with secluded seating to breathe in the unique ambience that is Est8.

LEVEL 9

Podium (A Walk in the Woods)



1. The Forest Get-away Sanctuary
2. The Hammock Grove
3. Storytelling Node
4. Water Lily Courtyard
5. Lotus Water Courtyard
6. The Jungle Walk
7. Zen Secret Courtyard Garden
8. Rock Secret Courtyard Garden

A Walk in the Woods

Take a **magical walk under the canopy of trees**, where the embracing feeling of living in a forest accompanies every step of your journey.

Along the walk, you'll discover silent havens of green and hidden seating nodes.

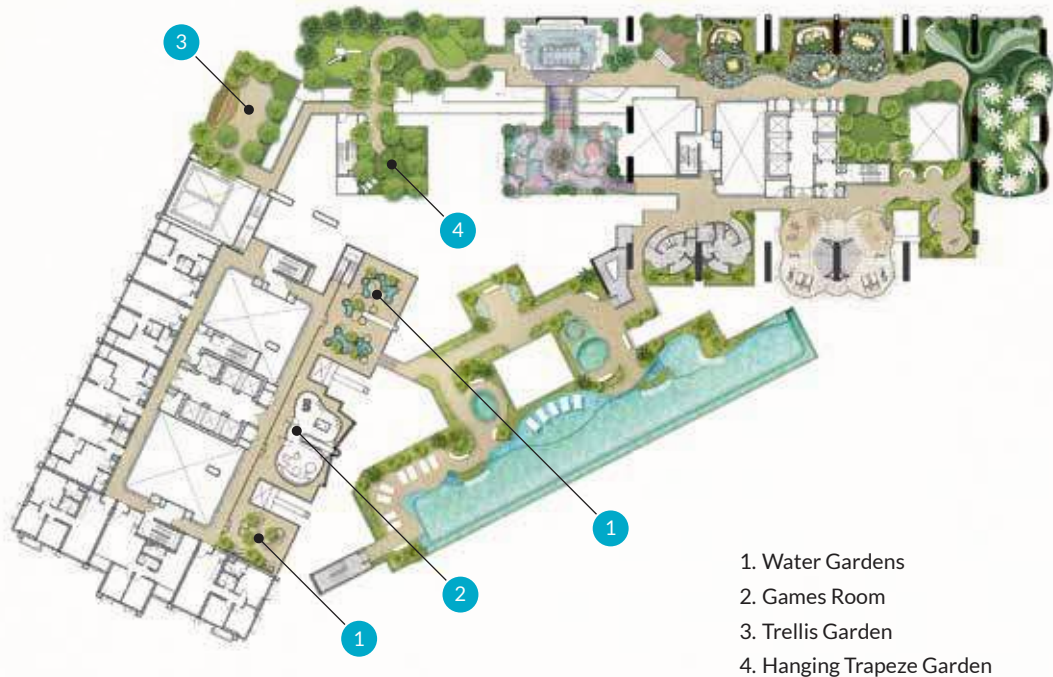
There are courtyard gardens filled with lilies and lotus as well as a **reflection pool that mirrors tranquillity**.

Sculptures adorn these sanctuaries, each one inviting you to immerse yourself in a **private world of peaceful thoughts**.

Throughout the Walk in the Woods, you'll glimpse villas nestled among the foliage, almost invisible - a **true home in the woods**.

LEVEL 12

Main Facilities Floor (The Enchanted Walk)



The Enchanted Walk

The Enchanted Walk takes you to a world that fuses **healthy living with the relaxation of the mind.**

The meandering walk takes you to many of Est8's innovative fitness facilities, including the 50 metre lap pool, an outdoor gym station, the sand beach and the jungle-inspired jacuzzi.

On the journey, there's also the glass-encased **Kaleidoscope Kitchen** and the whimsical **Kaleidoscope Courtyard** outdoor dining area, designed to infuse your next function experience with family and friends with touches of whimsy and magic.

The walk also introduces you to an array of cosy nooks and private spaces designed to embrace you with serenity.

They include the water gardens, the trellis garden and a hanging trapeze garden to **embrace your senses and thoughts with peaceful inspiration.** The games room provides the perfect setting for **relaxation and bonding** with family and friends.

Every facility and feature in the Enchanted Walk aims to transport you to a state of endless serenity and well-being.



A Sustainable, Safe Community

Building **sustainable, healthy homes** and communities is at the heart of Eupe's mission.

We are leaders in innovation in creating 'green' communities that blend the best of urban living with **ground-breaking, eco-friendly design.**

Est8 offers abundant gardens, nooks and trails - carefully curated by one of Malaysia's leading landscape designers - so you can connect with and be **inspired by nature.**

Central to Est8's masterplan is 'passive ventilation' - where the orientation of Est8's buildings mean air currents are drawn in and cooled so **you can enjoy the benefits of natural, healthy air.**

And because the health and safety of you and your loved ones are paramount, we've also designed a number of COVID-safe features into Est8.

These include:



An innovative wastewater system in every unit designed to **curb the spread of airborne viruses** and other germs.



Hand hygiene stations located throughout Est8.



Facility design that enables **socially-distanced interaction.**



Specially designed air ventilation system to circulate **healthy, safe air.**

The Team Behind the Project

Est8@Seputeh's concept, planning and design has been a collaborative effort, combining Eupe's award-winning internal project and design team with the best residential designers from outside agencies.



Eupe Corporation Berhad

Datin Michelle Gan is the Director, Group Sales and Marketing at Eupe. In addition to being a talented artist, Datin Michelle's key role in the company is to ensure Eupe's product design and development are a defining feature and key point of differentiation in all of the Group's residential projects. She has worked closely with external consultants to develop Est8's iconic interiors, facilities and landscaping.

She also works closely with Mr. Paul Chang - Director, Strategic Projects, who heads Eupe's Planning and Design Department. Est8's overall design masterplan was developed by Paul, reflecting his extensive experience in design consultancy and construction in both public and private sectors across a number of countries, including China, Japan and Singapore.

Ministry of Design (MOD)

Headquartered in Singapore with offices in Beijing and Kuala Lumpur, MOD is an integrated architectural and interior design firm that has won Singapore's President Design Award twice, New York's Gold Key Award three times, and named "Designer of the Year" by International Design Awards (USA) with 137 awards to date. MOD's portfolio includes award-winning residential and commercial developments.

Eupe commissioned MOD to design and enhance the liveability, functionality and aesthetics of Est8's sky gardens, facilities spaces and common areas.



MLA Landscape Architects

MLA Landscape Architects (MLA) is an award-winning landscape architecture firm that seeks to create distinctive environmental and landscape design identities that enhance the indoor and outdoor living spaces of major residential projects. Their work encompasses an innovative blend of art, environment, architecture, and engineering.

Their past award-winning projects include The Banjaran Spa & Hotspots Retreat, Pavilion Kuala Lumpur Shopping Mall, Setia Indah Town Park and The Spa & Med Beauty at The Club Saujana Resort.

About Eupe

Eupe Corporation Berhad has been building homes for more than 30 years.

Since that time, the company has become one of Malaysia's most successful and trusted township developers, having constructed over 20,000 homes in the northern Malaysian state of Kedah.

Our township origins mean we are strongly committed to traditional values, focusing on building trust with our stakeholders and offering more to our buyers for less.

In recent years, we have developed ground-breaking high-end residential projects in Kedah. These include Sky Residences, the first high-rise luxury residential development in Sungai Petani and the first Malaysian property development to achieve the globally prestigious LEED eco-design certification.

We are now entering an exciting new era with a number of major residential development projects being planned and designed in Kuala Lumpur to Eupe's award-winning standards.

Eupe is also the owner and operator of Cinta Sayang Golf and Country Resort, one of the largest and most recognised resorts in northern Malaysia. The company has since diversified into other operations, which support the Group's core property development division.

Eupe has been a publicly listed company since 1997.

The latest project by award-winning developer Eupe Corporation Berhad



THE EDGE
MALAYSIA
*Top Property
Developers Awards*
2020

THE EDGE
MALAYSIA
*Top Property
Developers Awards*
2021

THE EDGE
MALAYSIA
**Property Excellence
Awards 2021 | Winners**

THE EDGE - PEPS
**Value Creation Excellence
Award 2021 | Non-Residential**



+6017-275 7188
eupe.com.my

Facebook and Instagram icons
eupecorpbhd



Another exciting project by: **EUPE CORPORATION BERHAD** (377762-V) | Under its subsidiary: **TITIAN SAMA SDN BHD** (957887-P)

HEADQUARTERS 5th Floor, Wisma Ria, Taman Ria, 08000 Sungai Petani, Kedah Darul Aman, Malaysia. T.+604-441 4888 F.+604-425 1152
KLANG VALLEY OFFICE D-26-01, Menara Mitraland, No.13A, Jalan PJU 5/1, Kota Damansara PJU 5, 47810 Petaling Jaya, Selangor, Malaysia. T.+603-7610 0636 (GL) F.+603-7610 0651/52

Nama Pemaju: Titian Sama Sdn Bhd • Alamat Pemaju: D-26-1 Menara Mitraland, No. 13A, Jalan PJU 5/1, Kota Damansara PJU5, 47810 Petaling Jaya, Selangor D.E. • No. Telefon: +603-7610 0636 • Nombor Lesen Pemaju: 19122-2/07-2023/0580 (L) • Tempoh Sah Laku: 23/07/2021 - 22/07/2023 • Nombor Permit Iklan dan Jualan: 19122-2/07-2023/0580 (P) • Tempoh Sah Laku: 23/07/2021 - 22/07/2023 • Jenis Pegangan Tanah: Pajak 99 Tahun (berakhir pada 26 Februari 2118) • Sekatan-sekatan kepentingan: Tanah ini tidak boleh dipindahmilik, dipajak atau digadai tanpa kebenaran Jawatankuasa Kerja Tanah Wilayah Persekutuan Kuala Lumpur • Beban Tanah: Maybank • Nama Pemaju Perumahan: Residensi Estetik 8 (EST8) • Tarikh Dijangka Siap: Jun 2024 • Jenis Rumah: Pangsapuri Suite dan villa • Bilangan Unit: Blok A-432 unit; Blok B-372 unit; Blok C-17 unit • Luas Binaan: Blok A 543 kps (min) - 1,947 kps (maks); Blok B 543 kps (min) - 1,947 kps (maks); Blok C 966 kps (min) - 1,184 kps (maks) • Harga Jualan: Blok A RM573,600 (min) - RM1,743,600 (maks); Blok B RM637,200 (min) - RM1,946,400 (maks); Blok C RM1,099,200 (min) - RM1,228,800 (maks) • Nama PBT yang meluluskan plan kepada DEWAN BANDARAYA KUALA LUMPUR • No. Rujukan: BP S1 OSC 2020 0833 • IKLAN INI TELAH DILULUSKAN OLEH JABATAN PERUMAHAN NEGARA

The information contained herein is subject to change and cannot form part of an offer or contract. All measurements are approximate. While every reasonable care has been taken to prepare this brochure, the developer cannot be held responsible for any inaccuracy. All items are subject to variations, modifications and substitutions as may be required by the authorities or recommended by architect or engineer.



est8.com.my