

B  
RA  
ZE  
NLY

alix  
RESIDENCES

AU  
THE  
NTI  
C





A vision of **STRENGTH**

An ode to **INDEPENDENCE**

A manner of **PASSION**

A spectacle in **AMBITION**





## FEATURED FACILITIES

- 1 Tennis Court
- 2 Gym
- 3 Yoga Studio
- 4 Grand Pool
- 5 Jacuzzi Pool

- 6 Open Lawn
- 7 Jogging Track
- 8 Cabana Swing
- 9 Hammock Garden
- 10 BBQ Deck

- 11 Dining Alcove
- 12 Outdoor Community Gym
- 13 Urban Farming
- 14 Sky Futsal
- 15 Sky Pool

- 16 Sky Bar & Outdoor Dining
- 17 ALIX Theatre
- 18 Sky Dining
- 19 Brazen Lounge
- 20 Multipurpose Hall / Badminton Court



Artist's impression

# FACILITIES

UNPARALLELED AMENITIES DESIGNED AND CURATED  
FOR THE BOLD AND MULTI-FACETED.

**alix**  
RESIDENCES





THE GRAND POOL



THE SKY DINING



THE SKY FUTSAL



THE BRAZEN LOUNGE



THE HAMMOCK GARDEN



THE ALIX THEATRE





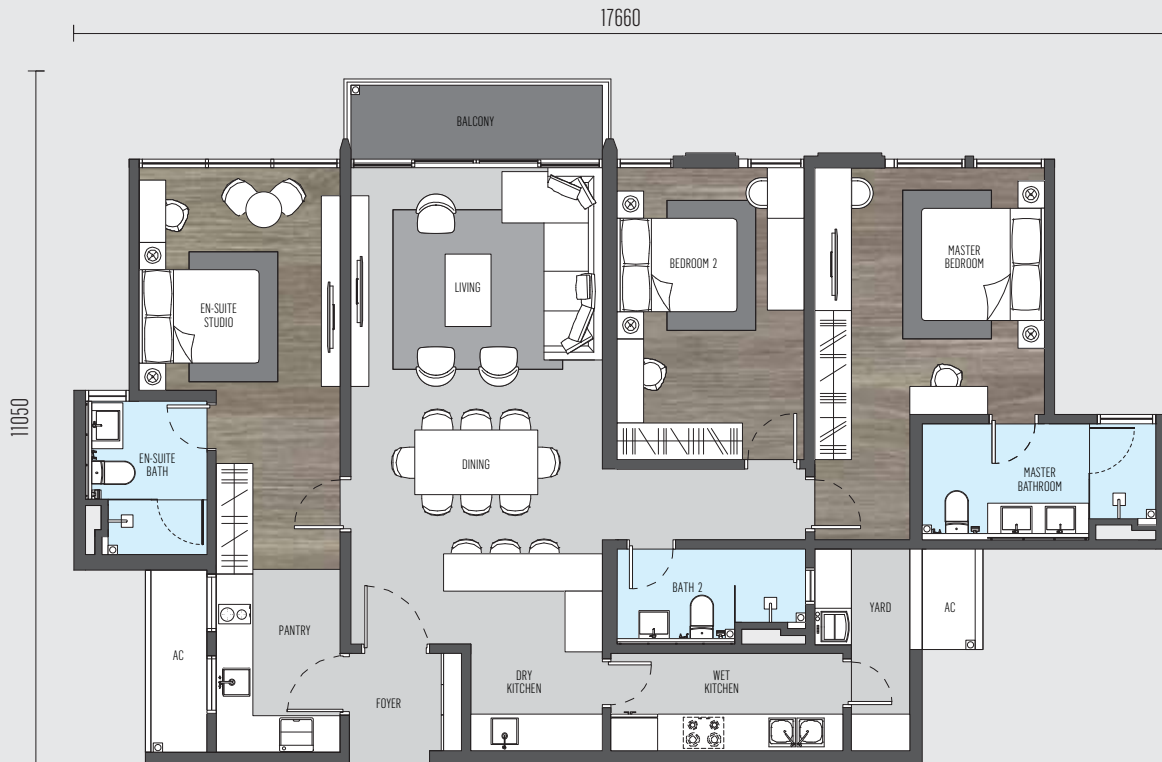


A living expression of its residents, **alix** embodies the spirit of the fearless generation. Destined to be the conclave of trailblazers, tastemakers and innovators; this is the epicentre of your life's adventures. Come and explore urban living that lets you be you.

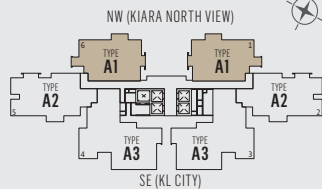


# TYPE - A1

BUILT-UP: 1,615 SQ.FT



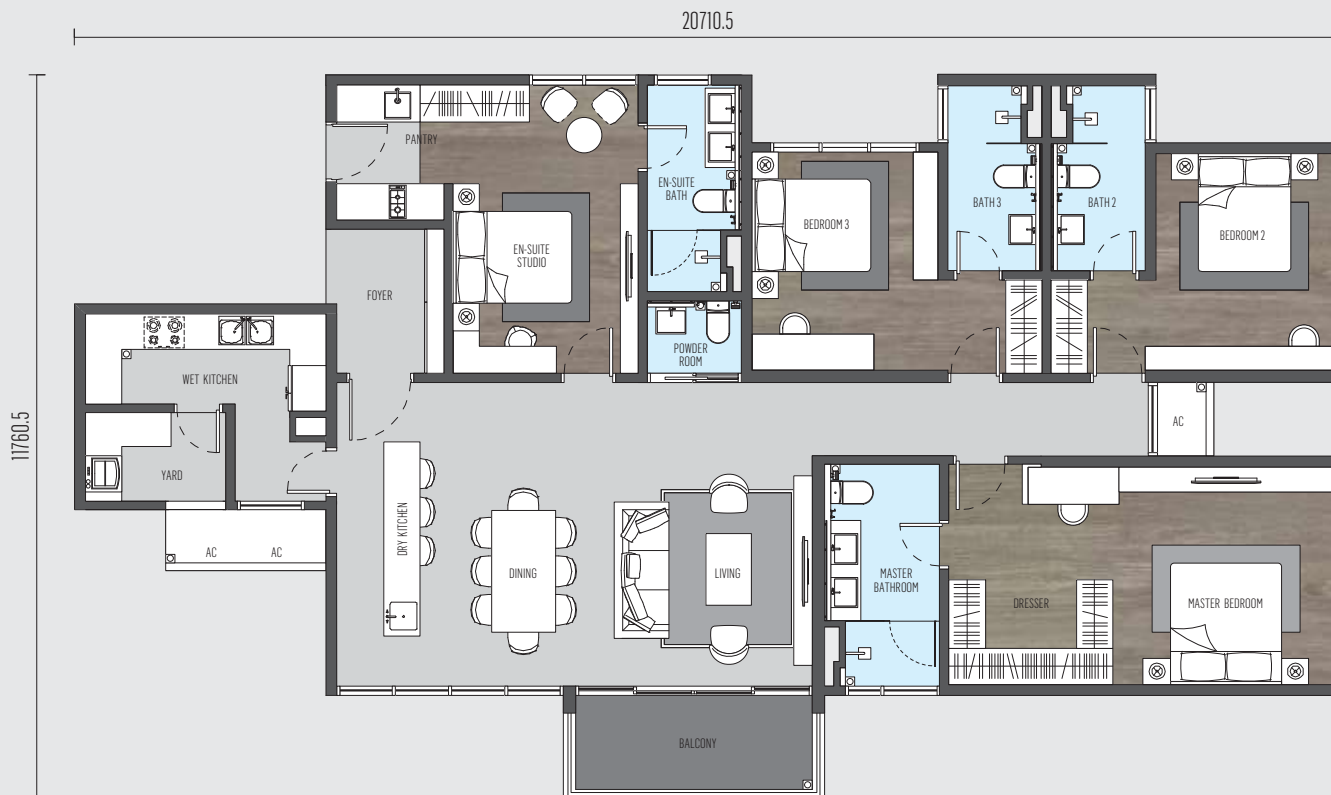
## TOWER A



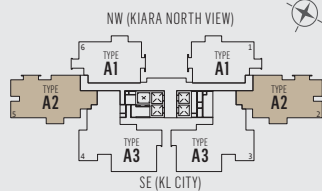


# TYPE - A2

BUILT-UP: 1,938 SQ.FT

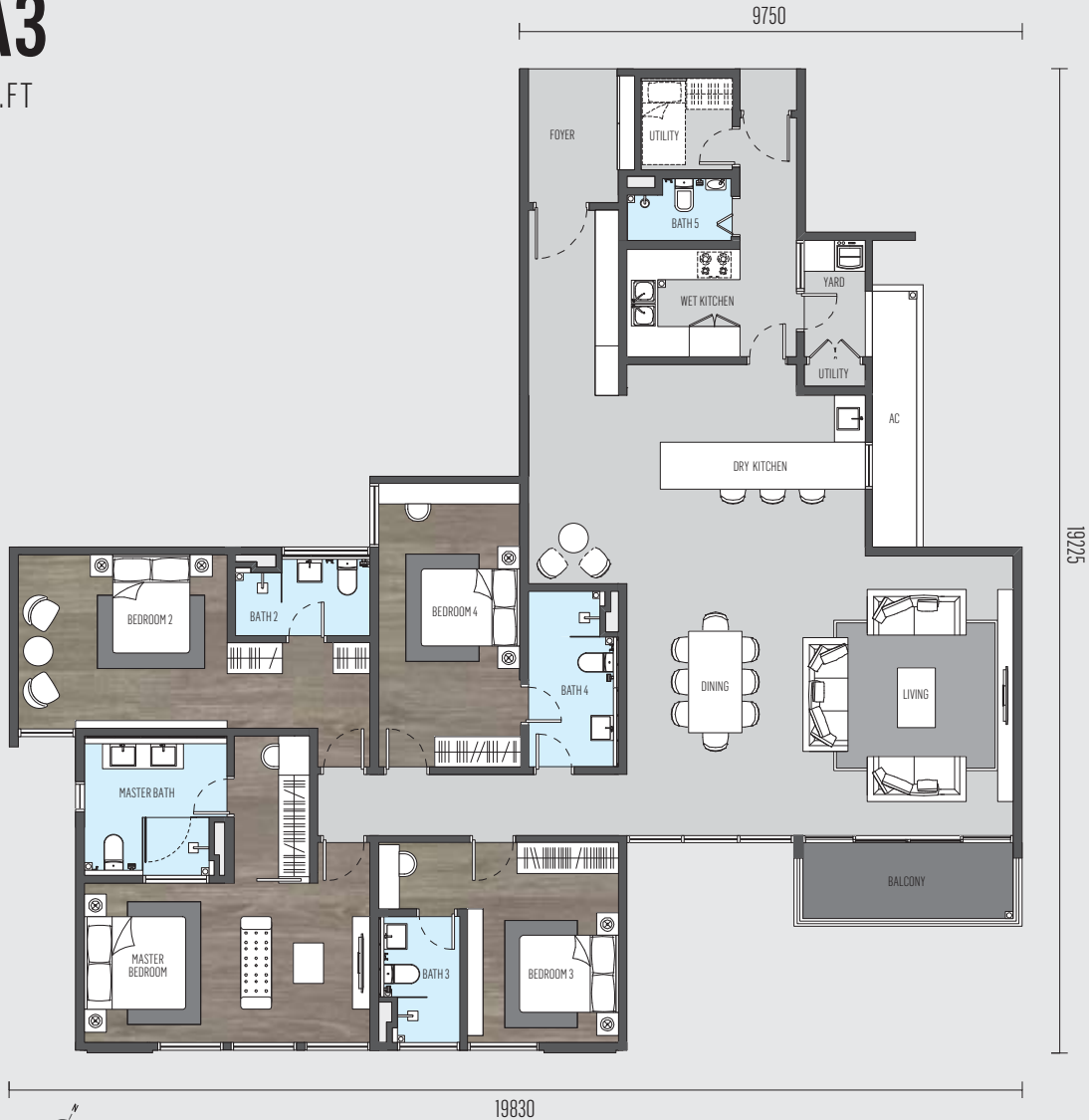


TOWER A

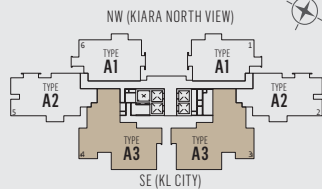


# TYPE - A3

BUILT-UP: 2,476 SQ.FT



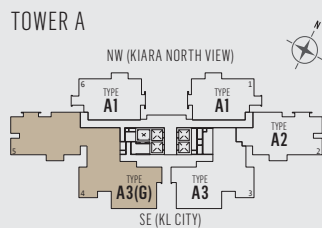
TOWER A





# TYPE - A3(G)

BUILT-UP: 4,381 SQ.FT



# PENTHOUSE TYPE 1

BUILT-UP: 6,544 SQ.FT

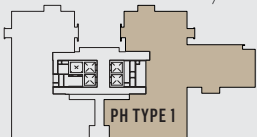
36265

310275



TOWER A

NW (KIARA NORTH VIEW)

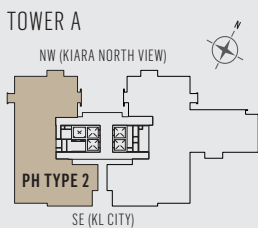


SE (KL CITY)



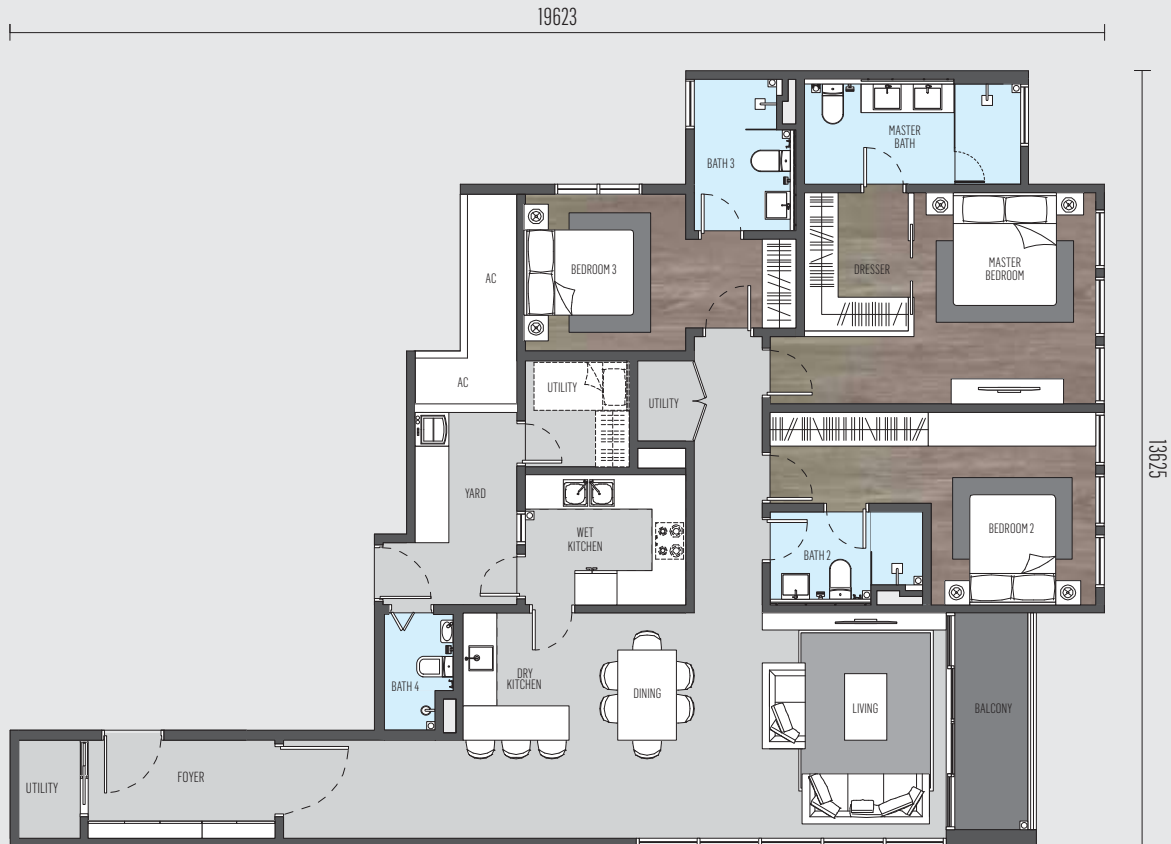
# PENTHOUSE TYPE 2

BUILT-UP: 4,865 SQ.FT

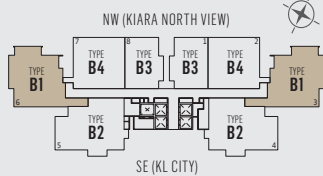


# TYPE - B1

BUILT-UP: 1,744 SQ.FT



## TOWER B





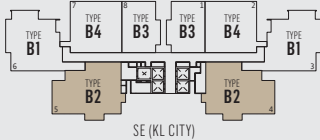
# TYPE - B2

BUILT-UP: 1,819 SQ.FT



## TOWER B

NW (KIARA NORTH VIEW)

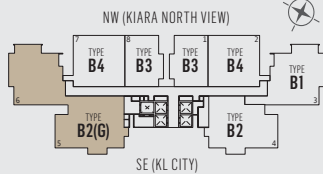


# TYPE - B2(G)

BUILT-UP: 3,552 SQ.FT



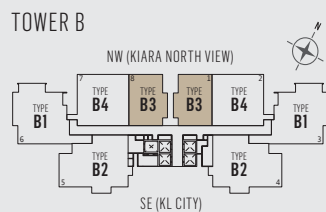
TOWER B





# TYPE - B3

BUILT-UP: 1,012 SQ.FT

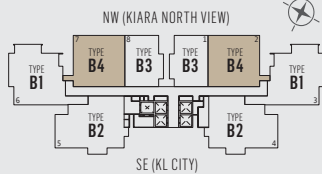


# TYPE - B4

BUILT-UP: 1,485 SQ.FT



## TOWER B





Situated at Kiara North, in the heart of Kuala Lumpur's most avant-garde locales,  
an emerging area of reinvention, galvanising towards a future of prominence.  
A residential haven that's mere steps from schools, shopping destinations, artisanal hubs and cultural spots.



## WALK

- Below 0.5 KM -

Proposed Private School  
Lycée Français de Kuala Lumpur  
(French School of Kuala Lumpur)  
SK Segambut Makmur



## RUN

- Below 2 KM -

KL Metropolis Proposed MRT Station  
Malaysia International Trade and  
Exhibition Centre (MITEC)  
Kiaramas Primary & Secondary  
School



## CYCLE

- 2-4 KM -

Publika Shopping Gallery  
MATRADE Exhibition and  
Convention Centre  
Solaris Mont'Kiara



## DRIVE

- Below 5 KM -

Garden International School  
Global Doctors Hospital  
Mont'Kiara International  
School

- Below 10 KM -

Bukit Kiara Equestrian &  
Country Resort  
Tournament Players Club Kuala  
Lumpur (TPCKL)  
KLCC

**alix**  
RESIDENCES

**TA GLOBAL**  
A MEMBER OF THE TA GROUP

A distinctive development by **TA Global Bhd (828855-P)** The holding company of **TA Properties Sdn Bhd (215450-W)** Developer: **Orchard Park Sdn Bhd (235189-H)** (a subsidiary of TA Properties Sdn Bhd)

Address: 34th Floor, Menara TA One, No. 22 Jalan P. Ramlee, 50250 Kuala Lumpur, Malaysia. Tel: 603 2072 1277 Fax: 603 2161 5146 • Developer's License No.: 9859-2/01-2021/67(L) • Validity: 16/01/2019 – 15/01/2021 • Advertising & Sales Permit No.: 9859-2/01-2021/67(P) • Validity: 16/01/2019 – 15/01/2021 • Approving Authority: Dewan Bandaraya Kuala Lumpur • Building Plan Approval No.: BPT1 OSC 2018.1004 • Land Tenure: Freehold • Land Encumbrance: Hong Leong Bank Berhad • Restriction in Interest: NIL • Expected Date of Completion: 48 Months from the date of SPA (estimated completion in June 2023) • Total Units ~Tower A: 200 units (Condominium) • Unit Type (Carpark) • Type A1 Dual Key: 1,615 sf (2) Price: RM1,451,888 – RM1,605,888 • Type A2 Dual Key: 1,938 sf (2) Price: RM1,723,888 – RM1,878,888 • Type A3: 2,476 sf (3) Price: RM2,214,888 – RM2,369,888 • Type A3(G) : 4,381 sf (4) Price: RM3,573,888 • Penthouse 1: 6,544 sf (4) Price: RM5,551,888 • Penthouse 2: 4,865 sf (4) Price: RM4,297,888 • Tower B: 164 units (Condominium) • Unit Type (Carpark) • Type B1: 1,744 sf (2) Price: RM1,551,888 – RM1,646,888 • Type B2 Dual Key: 1,619 sf (2) Price: RM1,621,888 – RM1,716,888 • Type B2(G) Dual Key: 3,552 sf (3) Price: RM3,176,888 • Type B3: 1,012 sf (2) Price: RM918,888 – RM1,013,888 • Type B4: 1,485 sf (2) Price: RM1,339,888 – RM1,434,888 • Bump-Up Discount: 5%

Whilst every effort is made to provide accurate and complete information, Orchard Park Sdn Bhd (235189-H) does not warrant or represent that the information in this document whether in print or electronic mail ("Document") is free from errors or omissions or is suitable for your intended use. The Developer shall not be held liable for any error, misrepresentation or changes. Photographs and illustrations used in this Document are not intended to be representation of fact and are artist's impression only, intended for indicative purposes to be interpreted as a visual aid only. Orchard Park Sdn Bhd (235189-H) and its sales agents make no representation through this Document as to the concept and design elements, appearance of dwelling, layout and the usage of space, dwelling mix and overall master plan layout. Prospective purchasers should make their own inspections and enquiries and seek their own professional advice on all aspects of the proposed development at Alix Residences, before entering into a contract of sale. The information contained in this Document shall not form part of an offer or contract. The above matters may be subject to variations, modifications and substitution as may be recommended by the Developer's consultant and/or required by the relevant Approving Authorities. This advertisement has been approved by the Ministry of Urban Wellbeing, Housing & Local Government.